



---

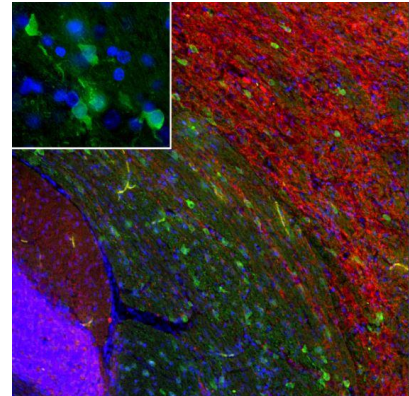
<b>Catalog Number:</b>	MO22196	<b>Host:</b>	Mouse
<b>Product Type:</b>	Mouse monoclonal IgG	<b>Species Reactivity:</b>	Human, rat, mouse, and cow
<b>Immunogen Sequence:</b>	Full length human PEA-15 as expressed in and purified from <i>E. coli</i>	<b>Format:</b>	Purified antibody at 1mg/mL in 50% PBS, 50% glycerol plus 5mM NaN3
<b>Applications:</b>	Immunofluorescent: 1:1,000-2,000 Immunocytochemistry: 1:1,000-2,000 Western Blot: 1:1,000-2,000		
	Dilutions listed as a recommendation. Optimal dilution should be determined by investigator.		
<b>Storage:</b>	Antibody can also be aliquotted and stored frozen at -20° C in a manual defrost freezer for six months without detectable loss of activity. The antibody is stable at 2° - 8° C for 1 year. Avoid repeated freeze-thaw cycles.		

---

### Application Notes

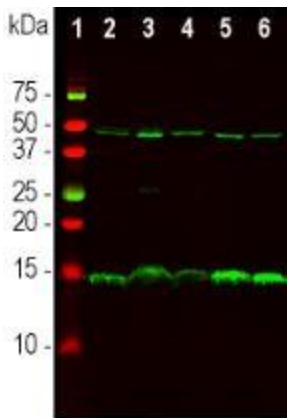
#### Description/Data:

PEA-15 was originally isolated as a major low molecular weight of embryonic mouse striatal astrocytes grown in cell culture. Three spots on 2D gels with an apparent molecular weight of 15kDa and isoelectric point 5.1-5.3 were shown to be different forms of one protein. The protein was serine phosphorylated on one site by protein kinase C both *in vivo* and *in vitro* and the protein was named "phosphoprotein enriched in astrocytes of 15kDa", hence PEA-15. Subsequent cloning and sequencing revealed a protein well conserved in sequence between mouse and human and which was heavily expressed in brain. Independently the same protein was found to be upregulated in fibroblasts and tissues of diabetic patients, and has hence named "protein enriched in diabetes" or PED. Immunocytochemical studies showed that the protein was heavily expressed in astrocytes and certain neurons in the CNS of mice, though it is expressed a lower levels ubiquitously. PEA-15 was shown to interact with extracellular signal regulated kinase and regulate the nuclear entry of this protein, and several other important interactions with other proteins involved in regulation of apoptosis, glucose metabolism and cell growth have been described. MCA-4D2 was made against a recombinant full length PEA-15 construct expressed in and purified from *E. coli*.



### FOR RESEARCH USE ONLY

NEUROMICS' REAGENTS ARE FOR IN VITRO AND CERTAIN NON-HUMAN IN VIVO EXPERIMENTAL USE ONLY AND NOT INTENDED FOR USE IN ANY HUMAN CLINICAL INVESTIGATION, DIAGNOSIS, PROGNOSIS, OR TREATMENT. THE ABOVE ANALYSES ARE MERELY TYPICAL GUIDES. THEY ARE NOT TO BE CONSTRUED AS BEING SPECIFICATIONS. ALL OF THE ABOVE INFORMATION IS, TO THE BEST OF OUR KNOWLEDGE, TRUE AND ACCURATE. HOWEVER, SINCE THE CONDITIONS OF USE ARE BEYOND OUR CONTROL, ALL RECOMMENDATIONS OR SUGGESTIONS ARE MADE WITHOUT GUARANTEE, EXPRESS OR IMPLIED, ON OUR PART. WE DISCLAIM ALL LIABILITY IN CONNECTION WITH THE USE OF THE INFORMATION CONTAINED HEREIN OR OTHERWISE, AND ALL SUCH RSKS ARE ASSUMED BY THE USER. WE FURTHER EXPRESSLY DISCLAIM ALL WARRANTIES OF MERCHANTABILITY AND FITNESS FOR A PARTICULAR PURPOSE.-V2/08/2012



Images: **Immunofluorescence:** Immunofluorescent analysis of rat brain section stained with mouse mAb to PEA-15, MO22196, dilution 1:1,000 in red, and costained with chicken pAb to MAP2, dilution 1:5,000 in green. The blue is Hoechst staining of nuclear DNA. The PEA-15 antibody labels the cytoplasm of certain presumably neuronal cells which are not labelled by the astrocyte specific GFAP antibody. **Western Blot:** Western blot analysis of different tissue lysates using mouse mAb to PEA-15 dilution 1:1,000 in green: [1] protein standard (red), [2] rat whole brain, [3] rat cerebellum, [4] mouse whole brain, [5] cow cortex and [6] cow cerebellum. The strong band at about 15kDa corresponds to the PEA-15 protein.

## FOR RESEARCH USE ONLY

NEUROMICS' REAGENTS ARE FOR IN VITRO AND CERTAIN NON-HUMAN IN VIVO EXPERIMENTAL USE ONLY AND NOT INTENDED FOR USE IN ANY HUMAN CLINICAL INVESTIGATION, DIAGNOSIS, PROGNOSIS, OR TREATMENT. THE ABOVE ANALYSES ARE MERELY TYPICAL GUIDES. THEY ARE NOT TO BE CONSTRUED AS BEING SPECIFICATIONS. ALL OF THE ABOVE INFORMATION IS, TO THE BEST OF OUR KNOWLEDGE, TRUE AND ACCURATE. HOWEVER, SINCE THE CONDITIONS OF USE ARE BEYOND OUR CONTROL, ALL RECOMMENDATIONS OR SUGGESTIONS ARE MADE WITHOUT GUARANTEE, EXPRESS OR IMPLIED, ON OUR PART. WE DISCLAIM ALL LIABILITY IN CONNECTION WITH THE USE OF THE INFORMATION CONTAINED HEREIN OR OTHERWISE, AND ALL SUCH RISKS ARE ASSUMED BY THE USER. WE FURTHER EXPRESSLY DISCLAIM ALL WARRANTIES OF MERCHANTABILITY AND FITNESS FOR A PARTICULAR PURPOSE.-V2/08/2012

[www.neuromics.com](http://www.neuromics.com)

Neuromics Antibodies • 5325 West 74<sup>th</sup> Street, Suite 8 • Edina, MN 55439  
 phone 866-350-1500 • fax 612-677-3976 • e-mail: [pshuster@neuromics.com](mailto:pshuster@neuromics.com)