



---

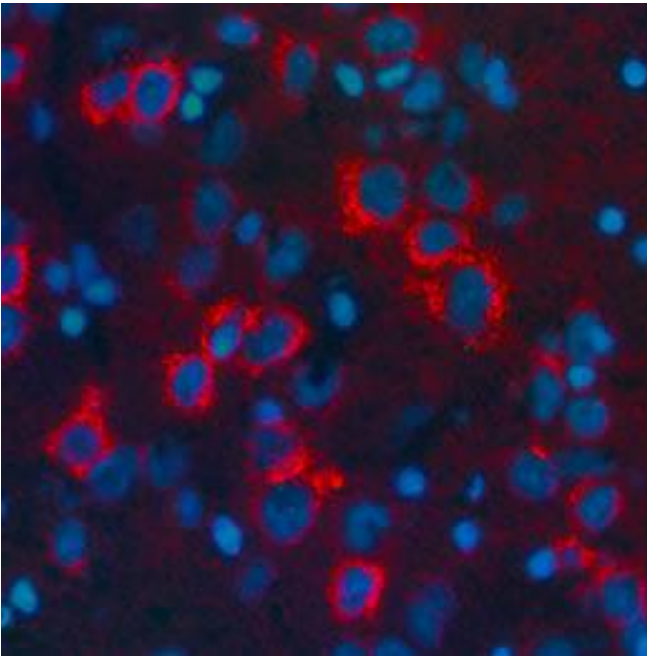
<b>Catalog Number:</b>	RA21003	<b>Host:</b>	Rabbit
<b>Product Type:</b>	Rabbit Polyclonal IgG	<b>Species Reactivity:</b>	Human, Mouse, and Rat
<b>Immunogen Sequence:</b>	human beta Lipotropin conjugated to thyroglobulin.	<b>Format:</b>	Lyophilized from 10 mM PBS.
<b>Applications:</b>	Immunohistochemistry: 5-10 ug/ml Immunofluorescence: 5-15 ug/ml  Dilutions listed as a recommendation. Optimal dilution should be determined by investigator.		
<b>Storage:</b>	The product can be stored as supplied for up to 12 months at 2°C-4°C. After reconstitution, aliquot and store at -20°C for higher stability or at 4°C with an appropriate antibacterial agent. Avoid freeze thaw-cycles.		

---

### Application Notes

#### Description/Data:

beta-Lipotropin is a 90-amino acid polypeptide that is the carboxy-terminal fragment of POMC. It stimulates melanocytes to produce melanin, and can also be cleaved into smaller peptides including opioid peptides: gamma-lipotropin, alpha-MSH, beta-MSH, gamma-MSH, alpha-endorphin, beta-endorphin, gamma-endorphin and met-enkephalin.



*Images: Immunohistochemical staining of beta-Lipotropin in mouse brain. 4% paraformaldehyde fixed rat brain 10 µm thick cryostat sections were incubated with rabbit polyclonal antibody to beta-Lipotropin at 10 µg/mL overnight at 4°C followed by incubation with Donkey anti-rabbit Rhodamine Red conjugated secondary antibodies at 1:200. Tissue was counterstained with DAPI (blue color) to visualize cell nuclei.*

**FOR RESEARCH USE ONLY**

NEUROMICS' REAGENTS ARE FOR IN VITRO AND CERTAIN NON-HUMAN IN VIVO EXPERIMENTAL USE ONLY AND NOT INTENDED FOR USE IN ANY HUMAN CLINICAL INVESTIGATION, DIAGNOSIS, PROGNOSIS, OR TREATMENT. THE ABOVE ANALYSES ARE MERELY TYPICAL GUIDES. THEY ARE NOT TO BE CONSTRUED AS BEING SPECIFICATIONS. ALL OF THE ABOVE INFORMATION IS, TO THE BEST OF OUR KNOWLEDGE, TRUE AND ACCURATE. HOWEVER, SINCE THE CONDITIONS OF USE ARE BEYOND OUR CONTROL, ALL RECOMMENDATIONS OR SUGGESTIONS ARE MADE WITHOUT GUARANTEE, EXPRESS OR IMPLIED, ON OUR PART. WE DISCLAIM ALL LIABILITY IN CONNECTION WITH THE USE OF THE INFORMATION CONTAINED HEREIN OR OTHERWISE, AND ALL SUCH RISKS ARE ASSUMED BY THE USER. WE FURTHER EXPRESSLY DISCLAIM ALL WARRANTIES OF MERCHANTABILITY AND FITNESS FOR A PARTICULAR PURPOSE.-V2/08/2012