



---

<b>Catalog Number:</b>	MO47020	<b>Host:</b>	Mouse
<b>Product Type:</b>	Mouse Monoclonal IgM	<b>Species Reactivity:</b>	Human
<b>Immunogen Sequence:</b>	Recombinant Human CD-15/Leu-M1	<b>Format:</b>	Liquid with PBS buffer, pH 7.4 with 0.02% Sodium Azide
<b>Applications:</b>	Immunohistochemistry: 1:2-3  Dilutions listed as a recommendation. Optimal dilution should be determined by investigator.		
<b>Storage:</b>	The product can be stored undiluted for several weeks at 4°C. Dilute only immediately before use. Aliquot and store at -20°C long term. Avoid freeze thaw-cycles.		

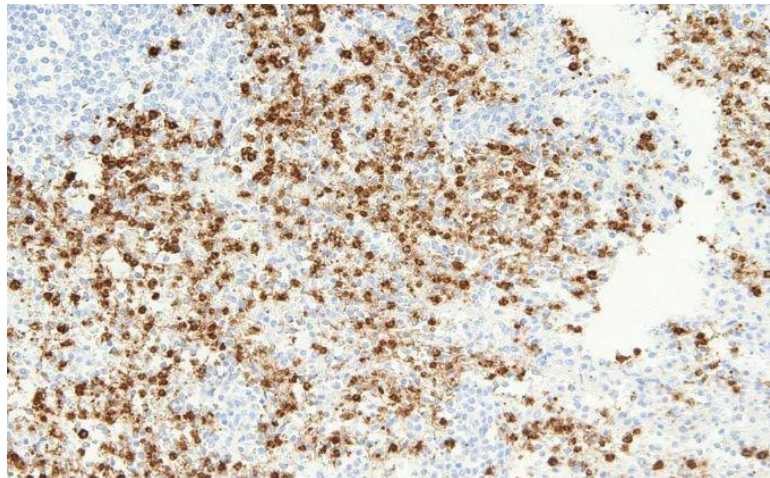
---

### Application Notes

**Description/Data:**

CD15/Leu-M1 Antibody is validated for the detection of CD15/Leu-M1. CD15 or Leu-M1 has a role in bactericidal activity, chemotaxis, and role in mediating phagocytosis. Negative staining may be useful for identifying Hodgkin's lymphoma tissue samples.

*Image: Immunohistochemistry staining of MO47020 on human spleen tissue.*



**FOR RESEARCH USE ONLY**

NEUROMICS' REAGENTS ARE FOR IN VITRO AND CERTAIN NON-HUMAN IN VIVO EXPERIMENTAL USE ONLY AND NOT INTENDED FOR USE IN ANY HUMAN CLINICAL INVESTIGATION, DIAGNOSIS, PROGNOSIS, OR TREATMENT. THE ABOVE ANALYSES ARE MERELY TYPICAL GUIDES. THEY ARE NOT TO BE CONSTRUED AS BEING SPECIFICATIONS. ALL OF THE ABOVE INFORMATION IS, TO THE BEST OF OUR KNOWLEDGE, TRUE AND ACCURATE. HOWEVER, SINCE THE CONDITIONS OF USE ARE BEYOND OUR CONTROL, ALL RECOMMENDATIONS OR SUGGESTIONS ARE MADE WITHOUT GUARANTEE, EXPRESS OR IMPLIED, ON OUR PART. WE DISCLAIM ALL LIABILITY IN CONNECTION WITH THE USE OF THE INFORMATION CONTAINED HEREIN OR OTHERWISE, AND ALL SUCH RISKS ARE ASSUMED BY THE USER. WE FURTHER EXPRESSLY DISCLAIM ALL WARRANTIES OF MERCHANTABILITY AND FITNESS FOR A PARTICULAR PURPOSE.-V2/08/2012

---

[www.neuromics.com](http://www.neuromics.com)

Neuromics Antibodies • 5325 West 74<sup>th</sup> Street, Suite 8 • Edina, MN 55439  
phone 866-350-1500 • fax 612-677-3976 • e-mail: [pshuster@neuromics.com](mailto:pshuster@neuromics.com)