



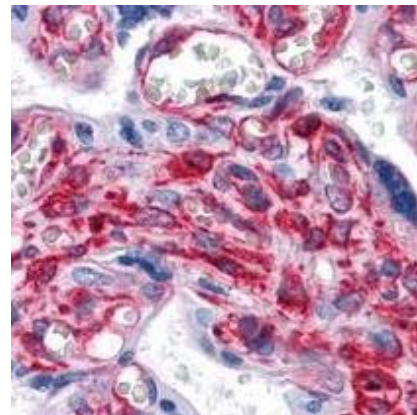
Catalog Number:	MO30006	Host:	Mouse
Product Type:	Mouse Monoclonal (IgG1)	Species Reactivity:	Human
Immunogen Sequence:	Raised against purified recombinant fragment of human VCAM1 expressed in E.coli	Format:	Ascites, with 0.03% sodium azide for preservative
Applications:	Immunohistochemistry: <ul style="list-style-type: none">• Paraffin: 1:200 Western Blot: 1:100-1:500 ELISA: 1:10000 Dilutions listed as a recommendation. Optimal dilution should be determined by investigator.		
Storage:	Store at 4°C . Avoid repeated freeze-thaw cycles.		
Gene Information:	Uniprot: P19320		

Application Notes

Description/Data:

Vascular cell adhesion protein 1 or VCAM1 is important for cell to cell recognition; and appears to play a role in leukocyte-endothelial cell adhesion. It may play a role in the development of atherosclerosis and rheumatoid arthritis.

Image: *Anti-VCAM1 antibody IHC of human placenta. Immunohistochemistry of formalin-fixed, paraffin-embedded tissue after heat-induced antigen retrieval. Antibody dilution 1:200.*



FOR RESEARCH USE ONLY

NEUROMICS' REAGENTS ARE FOR IN VITRO AND CERTAIN NON-HUMAN IN VIVO EXPERIMENTAL USE ONLY AND NOT INTENDED FOR USE IN ANY HUMAN CLINICAL INVESTIGATION, DIAGNOSIS, PROGNOSIS, OR TREATMENT. THE ABOVE ANALYSES ARE MERELY TYPICAL GUIDES. THEY ARE NOT TO BE CONSTRUED AS BEING SPECIFICATIONS. ALL OF THE ABOVE INFORMATION IS, TO THE BEST OF OUR KNOWLEDGE, TRUE AND ACCURATE. HOWEVER, SINCE THE CONDITIONS OF USE ARE BEYOND OUR CONTROL, ALL RECOMMENDATIONS OR SUGGESTIONS ARE MADE WITHOUT GUARANTEE, EXPRESS OR IMPLIED, ON OUR PART. WE DISCLAIM ALL LIABILITY IN CONNECTION WITH THE USE OF THE INFORMATION CONTAINED HEREIN OR OTHERWISE, AND ALL SUCH RISKS ARE ASSUMED BY THE USER. WE FURTHER EXPRESSLY DISCLAIM ALL WARRANTIES OF MERCHANTABILITY AND FITNESS FOR A PARTICULAR PURPOSE.-V2/08/2012