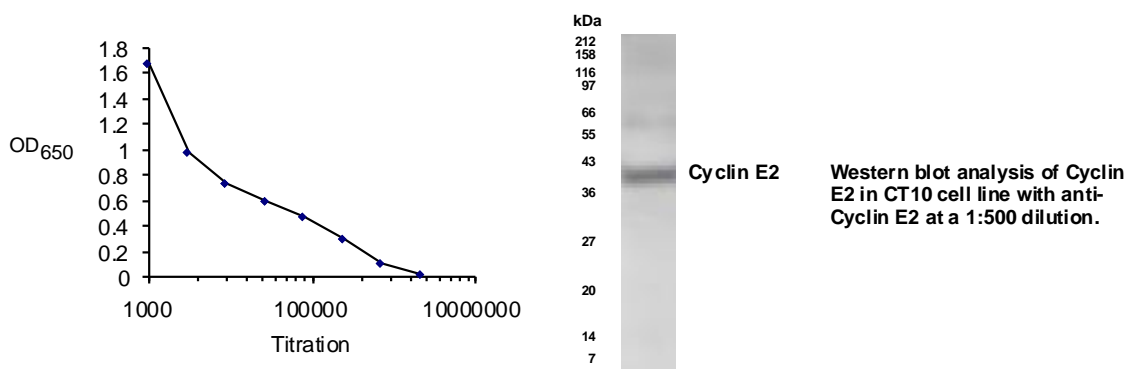


Cyclin E2 Polyclonal Antibody

Catalog Number:	RA19036
Lot Number:	4546
Quantity:	100 µg in 100 µl (1 mg/ml) in PBS containing 0.02% sodium azide.
Description:	Cyclin E2 is a novel gene that encodes a protein, which is elevated in cells expressing a papilloma viral oncogene.
Host Species:	Rabbit
Specificity:	Reacts with residues 2-15 [SRRSSRLQAKQQPQC] of the Cyclin E2 protein.



Applications:	Western blot – Use at 1:500 to 1:1,000 dilution. However, the investigator should determine the optimal dilution for a specific application such as immunohistochemistry.
Format:	Affinity purified IgG
Storage:	Maintain at +2-8°C for 3 months or at -20°C for longer periods. Stable for 1 year. Avoid repeated freeze-thaw cycles.
Reference:	Zariwala, M., Liu, J. and Xiong, Y. 1998 Oncogene 17: 2787-2798.

FOR RESEARCH USE ONLY

v1

Neuromics' reagents are for in vitro and certain non-human in vivo experimental use only and not intended for use in any human clinical investigation, diagnosis, prognosis, or treatment. We disclaim all liability in connection with the use of the information contained herein or otherwise, and all such risks are assumed by the user.