



**Catalog Number:** MO25011

**Host:** Mouse

**Product Type:** IgG<sub>1</sub> kappa

**Species Reactivity:** Bovine, Human, Mouse

**Immunogen Sequence:** Bovine RPE microsomal membrane proteins.

**Format:** Protein G Purified - Ascites Fluid.

**Applications:** Western blot-1:5,000-1:10,000  
Immunoprecipitation:1:5,000-1:10,000  
Immunohistochemistry-1:250  
Immunofluorescence 1:250

Dilutions listed as a recommendation. Optimal dilution should be determined by investigator.

**Storage:** Store frozen. Aliquot as undiluted antisera and immediately place at -20°C. Antisera may have become trapped in top of vial during shipping. Centrifugation of vial is recommended before opening. Stable for at least 6 months at -20°C. Repeated freeze/thaw cycles compromise the integrity of the antiserum.

### Application Notes

By Western blot, this antibody recognizes a band at ~65 kDa, representing bovine RPE65 protein. It has also been tested on recombinant human protein in COS7 cells. It may also be used in immunohistochemistry on murine retinal sections and ICC in porcine.

#### Description/Data:

Highly conserved among vertebrate species, RPE65 is a major protein of the retinal pigment epithelium (RPE). RPE65 is essential for the regeneration of rhodopsin in the visual cycle. Mutations in RPE65 are responsible for certain forms of autosomal recessive severe retinal dystrophy, including Leber Congenital Amaurosis (LCA). Loss of function results in a block in retinoid processing required for the synthesis of 11-cis retinal and the accumulation of retinyl esters in the RPE.

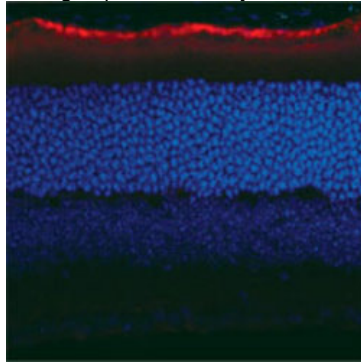


Image: RPE65 staining of mouse retina tissue.

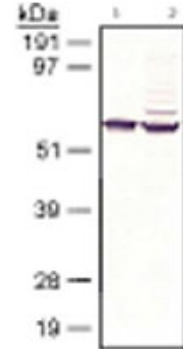


Image: RPE65 detected in bovine and human samples. Lane 1: bovine RPE membrane, lane 2: recombinant human RPE transfected COS7 cell lysate.

### FOR RESEARCH USE ONLY

NEUROMICS' REAGENTS ARE FOR IN VITRO AND CERTAIN NON-HUMAN IN VIVO EXPERIMENTAL USE ONLY AND NOT INTENDED FOR USE IN ANY HUMAN CLINICAL INVESTIGATION, DIAGNOSIS, PROGNOSIS, OR TREATMENT. THE ABOVE ANALYSES ARE MERELY TYPICAL GUIDES. THEY ARE NOT TO BE CONSTRUED AS BEING SPECIFICATIONS. ALL OF THE ABOVE INFORMATION IS, TO THE BEST OF OUR KNOWLEDGE, TRUE AND ACCURATE. HOWEVER, SINCE THE CONDITIONS OF USE ARE BEYOND OUR CONTROL, ALL RECOMMENDATIONS OR SUGGESTIONS ARE MADE WITHOUT GUARANTEE, EXPRESS OR IMPLIED, ON OUR PART. WE DISCLAIM ALL LIABILITY IN CONNECTION WITH THE USE OF THE INFORMATION CONTAINED HEREIN OR OTHERWISE, AND ALL SUCH RISKS ARE ASSUMED BY THE USER. WE FURTHER EXPRESSLY DISCLAIM ALL WARRANTIES OF MERCHANTABILITY AND FITNESS FOR A PARTICULAR PURPOSE. -V2/08/2012

[www.neuromics.com](http://www.neuromics.com)

Neuromics Antibodies • 5325 West 74<sup>th</sup> Street, Suite 8 • Edina, MN 55439  
phone 866-350-1500 • fax 612-677-3976 • e-mail: [pshuster@neuromics.com](mailto:pshuster@neuromics.com)