



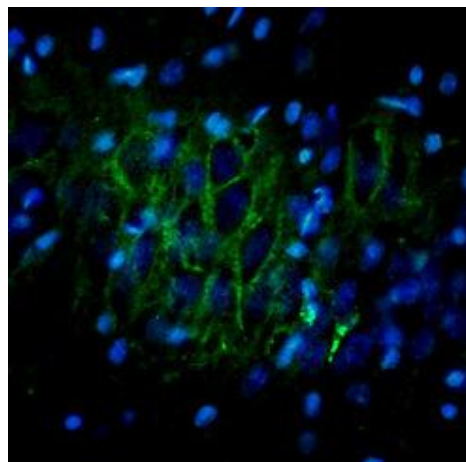
ORL 1 (opioid receptor like 1)

Data Sheet

Catalog Number:	RA14140	Host:	Rabbit
Product Type:	Affinity Purified	Species Reactivity:	Human, Rat, Mouse
Immunogen Sequence:	Synthetic Peptide CKTSETVPRPA conjugated to KLH	Format:	Liquid -PBS with 0.1% Sodium Azide. Concentration of 1 mg/ml.
Applications:	Immunohistochemistry-10 ug/ml-20 ug/ml*		
	*Dilutions listed as a recommendation. Optimal dilution should be determined by investigator.		
Storage:	Store frozen. Aliquot as undiluted antisera and immediately place at -20°C. Antisera may have become trapped in top of vial during shipping. Centrifugation of vial is recommended before opening. Stable for at least 6 months at -20°C. Repeated freeze/thaw cycles compromise the integrity of the antiserum.		

Application Notes

Image: ORL1 staining in rat brain(singulate cortex). ORL1 Detection was done using anti-rabbit Cy3 conjugated antibodies (red color). DAPI was used to counterstain cell nuclei (blue color). Working dilution is 10 ug/ml-20 ug/ml.



FOR RESEARCH USE ONLY

NEUROMICS REAGENTS ARE FOR IN VITRO AND CERTAIN NON-HUMAN IN VIVO EXPERIMENTAL USE ONLY AND NOT INTENDED FOR USE IN ANY HUMAN CLINICAL INVESTIGATION, DIAGNOSIS, PROGNOSIS, OR TREATMENT. THE ABOVE ANALYSES ARE MERELY TYPICAL GUIDES. THEY ARE NOT TO BE CONSTRUED AS BEING SPECIFICATIONS. ALL OF THE ABOVE INFORMATION IS, TO THE BEST OF OUR KNOWLEDGE, TRUE AND ACCURATE. HOWEVER, SINCE THE CONDITIONS OF USE ARE BEYOND OUR CONTROL, ALL RECOMMENDATIONS OR SUGGESTIONS ARE MADE WITHOUT GUARANTEE, EXPRESS OR IMPLIED, ON OUR PART. WE DISCLAIM ALL LIABILITY IN CONNECTION WITH THE USE OF THE INFORMATION CONTAINED HEREIN OR OTHERWISE, AND ALL SUCH RISKS ARE ASSUMED BY THE USER. WE FURTHER EXPRESSLY DISCLAIM ALL WARRANTIES OF MERCHANTABILITY AND FITNESS FOR A PARTICULAR PURPOSE- V2-08/2011

www.neuromics.com

Neuromics • 5325 West 74th Street, Suite 8 • Edina, MN 55439
phone 866-350-1500 • fax 612-677-3976 • e-mail pshuster@neuromics.com