



Beta Amyloid

Data Sheet

Catalog Number:	MO20004	Host:	Mouse
Ig Class:	IgG ₁	Species Reactivity:	Human
Immunogen Sequence:	Synthetic peptide representing a site on the human beta amyloid molecule.	Format:	Liquid- tissue culture supernatant containing containing 15mM sodium azide.
Applications:	Immunohistochemistry -1:50 (Paraffin-embedded tissue) 60 minutes primary antibody incubation at 25° C. Standard ABC technique.		
Storage:	Dilutions listed as a recommendation. Optimal dilution should be determined by investigator. Antibody can be aliquotted and stored frozen at -20° C to -70° C in a manual defrost freezer for six months without detectable loss of activity. The antibody can be stored at 2° - 8° C for 1 month without detectable loss of activity. <i>Avoid repeated freeze-thaw cycles.</i>		

Application Notes

Immunohistochemistry

Positive staining can be observed in senile plaque cores, plaque periphery and diffuse plaques. In some cases staining can be observed in vessel walls and in extracellular neurofibrillary tangles.

Paraffin embedded Tissue Preparation- immerse sections in 3% W/V methanol/hydrogen peroxide for 10 minutes, incubate in 98-100% formic acid for 3 minutes and then immediately rinse in distilled water.

Description/Data:

Beta amyloid is an extracellular filamentous protein deposit found in the brain. It is the major protein component of amyloid cores and neuritic plaques and is also found as a deposit in neurofibrillary tangles. In man, Alzheimer's disease is the most common cause of senile dementia and is characterized by abnormal filamentous protein deposits in the brain. Beta amyloid deposits are also detected in Lewy body dementia, Down's syndrome, amyloidosis (Dutch type) and in the Guam Parkinson-Dementia complex.

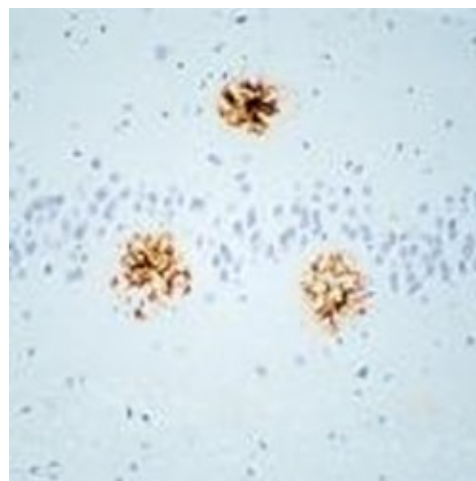


Image: B-Amyloid staining of paraffin embedded Human brain Tissue with Alzheimer's disease. Note intense staining of senile plaques.

FOR RESEARCH USE ONLY

NEUROMICS' REAGENTS ARE FOR IN VITRO AND CERTAIN NON-HUMAN IN VIVO EXPERIMENTAL USE ONLY AND NOT INTENDED FOR USE IN ANY HUMAN CLINICAL INVESTIGATION, DIAGNOSIS, PROGNOSIS, OR TREATMENT. THE ABOVE ANALYSES ARE MERELY TYPICAL GUIDES. THEY ARE NOT TO BE CONSTRUED AS BEING SPECIFICATIONS. ALL OF THE ABOVE INFORMATION IS, TO THE BEST OF OUR KNOWLEDGE, TRUE AND ACCURATE. HOWEVER, SINCE THE CONDITIONS OF USE ARE BEYOND OUR CONTROL, ALL RECOMMENDATIONS OR SUGGESTIONS ARE MADE WITHOUT GUARANTEE, EXPRESS OR IMPLIED, ON OUR PART. WE DISCLAIM ALL LIABILITY IN CONNECTION WITH THE USE OF THE INFORMATION CONTAINED HEREIN OR OTHERWISE, AND ALL SUCH RISKS ARE ASSUMED BY THE USER. WE FURTHER EXPRESSLY DISCLAIM ALL WARRANTIES OF MERCHANTABILITY AND FITNESS FOR A PARTICULAR PURPOSE.-V2/08/2012

www.neuromics.com

Neuromics Antibodies • 5325 West 74th Street, Suite 8 • Edina, MN 55439
phone 866-350-1500 • fax 612-677-3976 • e-mail: pshuster@neuromics.com