

NEUROMICS



Smooth Coat Solution

Catalog #: SC300

Storage: 2°C-8°C for up to 2 months
-20°C long term storage

Size: 20 ml

pH: 3

Source: ECM

Purity: >95% by SDS PAGE

Product Format: Liquid

Endotoxin Level: ≤ 1 EU/mL

General Information

Collagen is a fibrous protein found in the extracellular matrix and connective tissue. The most common form of collagen is type I and is most prevalent in bone, tendon and skin. It consists of 3 intertwined coiled subunits: 2 x $\alpha 1$ (I) chains and 1 x $\alpha 2$ (I) chain. Each chain contains 1050 amino acids wound tightly around one another in a characteristic right-handed triple helix. The triple-helical structure of collagen arises from unique abundance of the amino acids in collagen appear in a characteristic repeating motif Gly-X-Y, where X is usually proline and Y is usually hydroxyproline.

Smooth Coat Solution (SC300) is a biocompatible complex of extracellular matrix binding solution that helps accelerate cell attachment in ≤ 7 minutes. SC300 is a purified GMP grad solution in which cells proliferate and stabilize.

SC300 is ideal for plate coating due to its unique viscosity. Its coating greatly enables cell migration on cultured plate surfaces. Perfect for establishing primary cell lines, it can increase endothelial cell attachment and survival in culture. Smooth Coat Solution is great for both coating plates and T-flasks.

Shipping and Storage

Product is shipped with an ice pack. Upon arrival Smooth Coat Solution should be stored at 2°C-8°C for two months. For long term storage keep Smooth Coat Solution at -20°C.

Protocol

Add sufficient collagen solution to coat dishes, plates or inserts. 1-2 ml of solution is sufficient to cover a 35 mm dish. Incubate at room temperature in a biological safety cabinet partially covered for 1 hour. Carefully aspirate remaining solution. Rinse with proper volume of serum-free media to remove buffer solution. Coated plates are best used immediately but can be air dried and stored under sterile conditions at 2-8 °C for up to one week.

Well	Area (cm ²)	Coating Volume (mL)	Wash volume (mL)
96	0.143	0.025	0.05
24	0.33	0.05	0.1
12	1.12	0.25	0.4
6	4.67	0.6	1
75 mm insert	44	5	8

FOR RESEARCH USE ONLY

NEUROMICS REAGENTS ARE FOR IN VITRO AND CERTAIN NON-HUMAN IN VIVO EXPERIMENTAL USE ONLY AND NOT INTENDED FOR USE IN ANY HUMAN CLINICAL INVESTIGATION, DIAGNOSIS, PROGNOSIS, OR TREATMENT. THE ABOVE ANALYSES ARE MERELY TYPICAL GUIDES. THEY ARE NOT TO BE CONSTRUED AS BEING SPECIFICATIONS. ALL OF THE ABOVE INFORMATION IS, TO THE BEST OF OUR KNOWLEDGE, TRUE AND ACCURATE. HOWEVER, SINCE THE CONDITIONS OF USE ARE BEYOND OUR CONTROL, ALL RECOMMENDATIONS OR SUGGESTIONS ARE MADE WITHOUT GUARANTEE, EXPRESS OR IMPLIED, ON OUR PART. WE DISCLAIM ALL LIABILITY IN CONNECTION WITH THE USE OF THE INFORMATION CONTAINED HEREIN OR OTHERWISE, AND ALL SUCH RISKS ARE ASSUMED BY THE USER. WE FURTHER EXPRESSLY DISCLAIM ALL WARRANTIES OF MERCHANTABILITY AND FITNESS FOR A PARTICULAR PURPOSE. v1-09809

www.neuromics.com

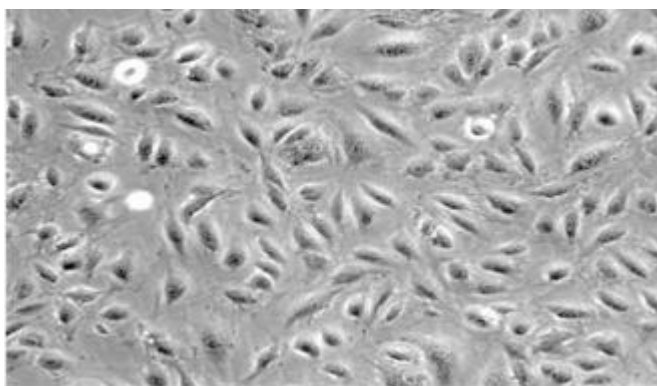
Neuromics Antibodies • 5325 West 74th Street, Suite 8 • Edina, MN 55439
Phone 866-350-1500 • fax 612-677-3976 • email: pshuster@neuromics.com

Protocol for T-25 flask

1. Use 2ml of Smooth Coat Solution into one T-25 flask and make sure all surfaces are covered
2. Place flask in 37°C incubator for 30 minutes, dispose of Smooth Coat Solution by aspiration and the flask is ready to be used. (There is no need for overnight incubation)
3. Gently rinse the cells in with 5 ml 1XPBS at room temperature twice. Ensure the flask is at a neutral pH before seeding cells into the T-25 flask
4. Remove cells from the liquid nitrogen, place in a water bath to thaw cells (Note: don't spin the cells during the subculture process)
5. Suspend the cells with 5 ml of media. Transfer cells suspension directly into pre-coated T-25 flask
6. Place cells in a 37°C incubator
7. Follow the cell culture protocol for proliferating
8. Culture media is changed every 2 days

Note: Handling of any product derived from an organism is potentially biohazardous. Proper precautions must be taken to avoid inadvertent exposure. Always wear gloves and safety glasses when working these materials. Never mouth pipette. We recommend following the universal procedures for handling products of an organism origin as the minimum precaution against contamination.

Image: Primary GFP HUVEC's cultured on SC300 coated plate.



FOR RESEARCH USE ONLY

NEUROMICS REAGENTS ARE FOR IN VITRO AND CERTAIN NON-HUMAN IN VIVO EXPERIMENTAL USE ONLY AND NOT INTENDED FOR USE IN ANY HUMAN CLINICAL INVESTIGATION, DIAGNOSIS, PROGNOSIS, OR TREATMENT. THE ABOVE ANALYSES ARE MERELY TYPICAL GUIDES. THEY ARE NOT TO BE CONSTRUED AS BEING SPECIFICATIONS. ALL OF THE ABOVE INFORMATION IS, TO THE BEST OF OUR KNOWLEDGE, TRUE AND ACCURATE. HOWEVER, SINCE THE CONDITIONS OF USE ARE BEYOND OUR CONTROL, ALL RECOMMENDATIONS OR SUGGESTIONS ARE MADE WITHOUT GUARANTEE, EXPRESS OR IMPLIED, ON OUR PART. WE DISCLAIM ALL LIABILITY IN CONNECTION WITH THE USE OF THE INFORMATION CONTAINED HEREIN OR OTHERWISE, AND ALL SUCH RISKS ARE ASSUMED BY THE USER. WE FURTHER EXPRESSLY DISCLAIM ALL WARRANTIES OF MERCHANTABILITY AND FITNESS FOR A PARTICULAR PURPOSE. v1-09809

www.neuromics.com

Neuromics Antibodies • 5325 West 74th Street, Suite 8 • Edina, MN 55439
Phone 866-350-1500 • fax 612-677-3976 • email: pshuster@neuromics.com