



Catalog Number:	RA25078	Host:	Rabbit
Product Type:	Affinity Purified	Species Reactivity:	Human, Rat, Mouse, Primate, Rabbit, and Bovine
Immunogen Sequence:	A synthetic peptide to an internal region (within residues 300-400) of the human LPIN1 protein. [Swiss-Prot# Q14693].	Format:	Liquid. Tris-glycine, 150mM NaCl with 0.05% Sodium Azide as a preservative. Concentration 1 mg/ml.
Applications:	Immunohistochemistry: 1:100-1:250 (Paraffin Embedded). Immunofluorescence: 1:500-1:200. Immunocytochemistry: 1:50-1:200. Western blot: 0.5-2.0 ug/ml. *Dilutions listed as a recommendation. Optimal dilution should be determined by investigator.		
Storage:	Store frozen. Aliquot as undiluted antisera and immediately place at -20°C. Antisera may have become trapped in top of vial during shipping. Centrifugation of vial is recommended before opening. Stable for at least 6 months at -20°C. Repeated freeze/thaw cycles compromise the integrity of the antiserum.		
Publications:	1. Hergovich A, et al. Priming-dependent phosphorylation and regulation of the tumor suppressor pVHL by glycogen synthase kinase 3. <i>Mol Cell Biol.</i> 2006 Aug;26(15):5784-96. 2. Naga Prasad SV, Duan Z-H, Gupta MK, et al. Unique MicroRNA Profile in End-stage Heart Failure Indicates Alterations in Specific Cardiovascular Signaling Networks. <i>J Biol Chem</i> 2009;284(40):27487-27499. [PMID: 19641226]		

Application Notes

This antibody is useful for Western blot, IF, ICC and IHC-paraffin. In WB a band is seen at ~55 kDa on kidney membrane preps representing GLUT1 protein. Depending on the tissue and any post-translational modifications, this protein can run anywhere between 40-60 kDa.

Immunohistochemistry-paraffin embedded sections

Antigen Retrieval:

Bring slides to a boil in 10 mM sodium citrate buffer pH 6.0 then maintain at a sub-boiling temperature for 10 minutes. Cool slides on bench top for 30 minutes.

Staining:

1. Wash sections in dH₂O three times for 5 minutes each.
2. Wash section in wash buffer (1X PBS/0.1% Tween-20 (1X PBST)) for 5 minutes.
3. Block each section with 100-400 µl blocking solution (1X PBST, 5% goat serum) for 1 hour at room temperature.
4. Remove blocking solution and add 100-400 µl primary antibody diluted in 1X PBST, 5% goat serum to each section. Incubate overnight at 4°C.

FOR RESEARCH USE ONLY

NEUROMICS REAGENTS ARE FOR IN VITRO AND CERTAIN NON-HUMAN IN VIVO EXPERIMENTAL USE ONLY AND NOT INTENDED FOR USE IN ANY HUMAN CLINICAL INVESTIGATION, DIAGNOSIS, PROGNOSIS, OR TREATMENT. THE ABOVE ANALYSES ARE MERELY TYPICAL GUIDES. THEY ARE NOT TO BE CONSTRUED AS BEING SPECIFICATIONS. ALL OF THE ABOVE INFORMATION IS, TO THE BEST OF OUR KNOWLEDGE, TRUE AND ACCURATE. HOWEVER, SINCE THE CONDITIONS OF USE ARE BEYOND OUR CONTROL, ALL RECOMMENDATIONS OR SUGGESTIONS ARE MADE WITHOUT GUARANTEE, EXPRESS OR IMPLIED, ON OUR PART. WE DISCLAIM ALL LIABILITY IN CONNECTION WITH THE USE OF THE INFORMATION CONTAINED HEREIN OR OTHERWISE, AND ALL SUCH RISKS ARE ASSUMED BY THE USER. WE FURTHER EXPRESSLY DISCLAIM ALL WARRANTIES OF MERCHANTABILITY AND FITNESS FOR A PARTICULAR PURPOSE. -V2-01/13

www.neuromics.com

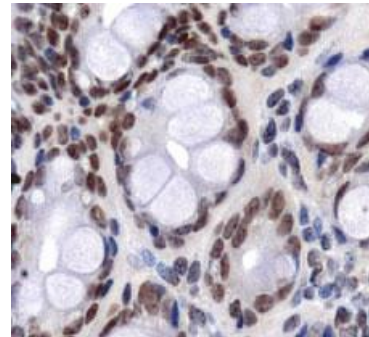
Neuromics Antibodies • 5325 West 74th Street, Suite 8 • Edina, MN 55439
 phone 866-350-1500 • fax 612-677-3976 • e-mail pshuster@neuromics.com

5. Remove antibody solution and wash sections in wash buffer three times for 5 minutes each.
6. Add 100-400 μ l biotinylated secondary antibody, diluted in 1X PBST, 5% goat serum. Incubate 30 minutes at room temperature.
7. Remove secondary antibody solution and wash sections three times with wash buffer for 5 minutes each.
8. Add 100-400 μ l Streptavidin-HRP reagent to each section and incubate for 30 minutes at room temperature.
9. Wash sections three times in wash buffer for 5 minutes each.
10. Add 100-400 μ l DAB substrate to each section and monitor staining closely.
11. As soon as the sections develop, immerse slides in dH₂O.
12. Counterstain sections in hematoxylin.
13. Wash sections in dH₂O two times for 5 minutes each.
14. Dehydrate sections.
15. Mount coverslips.

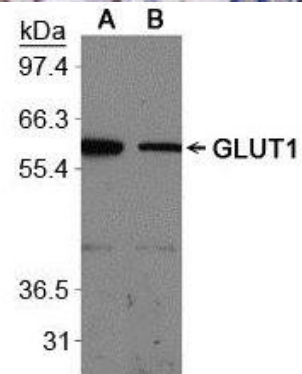
Western Blot:

1. Perform SDS-PAGE (4-12%) on samples to be analyzed, loading 40 μ g of total protein per lane.
 2. Transfer proteins to Nitrocellulose according to the instructions provided by the manufacturer of the transfer apparatus.
 3. Rinse membrane with dH₂O and then stain the blot using Ponceau S for 1-2 minutes to access the transfer of proteins onto the nitrocellulose membrane. Rinse the blot in water to remove excess stain and mark the lane locations and locations of molecular weight markers using a pencil.
 4. Rinse the blot in TBS for approximately 5 minutes.
 5. Block the membrane using 5% non-fat dry milk + 1% BSA in TBS, for 2 hours at room temperature.
 6. Rinse the membrane in dH₂O and then wash the membrane in wash buffer [TBS + 0.1% Tween] 3 times for 10 minutes each.
 7. Dilute the rabbit anti-GLUT1 primary antibody in blocking buffer and incubate overnight at 4 degrees Celcius.
 8. Rinse the membrane in dH₂O and then wash the membrane in wash buffer [TBS + 0.1% Tween] 3 times for 10 minutes each.
 9. Apply the diluted rabbit-IgG HRP-conjugated secondary antibody in blocking buffer (as per manufacturer's instructions) and incubate 1 hour at room temperature.
 10. Wash the blot in wash buffer [TBS + 0.1% Tween] 3 times for 10 minutes each (this step can be repeated as required to reduce background).
 11. Apply the detection reagent of choice in accordance with the manufacturer's instructions (Pierce's ECL).
- Note: Tween-20 can be added to the blocking or antibody dilution buffer at a final concentration of 0.05-0.2%, provided it does not interfere with antibody-antigen binding.

Detection of GLUT1 in paraffin embedded mouse intestine.



Western blot analysis of GLUT1 on A. mouse kidney membrane protein and B. rat kidney membrane protein.



FOR RESEARCH USE ONLY

NEUROMICS REAGENTS ARE FOR IN VITRO AND CERTAIN NON-HUMAN IN VIVO EXPERIMENTAL USE ONLY AND NOT INTENDED FOR USE IN ANY HUMAN CLINICAL INVESTIGATION, DIAGNOSIS, PROGNOSIS, OR TREATMENT. THE ABOVE ANALYSES ARE MERELY TYPICAL GUIDES. THEY ARE NOT TO BE CONSTRUED AS BEING SPECIFICATIONS. ALL OF THE ABOVE INFORMATION IS, TO THE BEST OF OUR KNOWLEDGE, TRUE AND ACCURATE. HOWEVER, SINCE THE CONDITIONS OF USE ARE BEYOND OUR CONTROL, ALL RECOMMENDATIONS OR SUGGESTIONS ARE MADE WITHOUT GUARANTEE, EXPRESS OR IMPLIED, ON OUR PART. WE DISCLAIM ALL LIABILITY IN CONNECTION WITH THE USE OF THE INFORMATION CONTAINED HEREIN OR OTHERWISE, AND ALL SUCH RISKS ARE ASSUMED BY THE USER. WE FURTHER EXPRESSLY DISCLAIM ALL WARRANTIES OF MERCHANTABILITY AND FITNESS FOR A PARTICULAR PURPOSE. -V2-01/13

www.neuromics.com

Neuromics Antibodies • 5325 West 74th Street, Suite 8 • Edina, MN 55439
 phone 866-350-1500 • fax 612-677-3976 • e-mail pshuster@neuromics.com

Diabetes and Obesity Research Antibodies

Name	Catalog #	Type	Species	Applications	Size	Price
4-Hydroxynonenal (HNE)	GT19004	Goat IgG	H	WB	100 ul	\$295
5-Hydroxymethyluridine (5-HmdU)	GT19005	Goat IgG	H	WB	100 ul	\$295
ABCA1	MO13101	Mouse IgG	H; M; R	WB	100 ul	\$265
ACE/CD143	GT15145	Goat IgG	H; R	IHC; WB; FC; E	100 ug	\$365
ACE/CD143-Phycoerythrin Labeled	FC15000	Mouse IgG	H; R	FC	100 Tests	\$275
ACTH	RA21005	Rabbit IgG	H; R	ICC; IF; WB	50 ug	\$155
pan Akt/KinaseB	MO15107	Mouse IgG	H; M; R	IHC; WB; FC; E	100 ug	\$255
Adiponutrin/ADPN	GT15230	Goat IgG	H	IHC; WB; E	100 ug	\$365
ATGL	RA25015	Rabbit IgG	M; R	WB	100 ul	\$245
Agouti-Related Protein	GT15023	Goat IgG	M; R	ICC; IHC; WB; E	100 ug	\$365
Agouti-Related Protein (Human)	GT15040	Goat IgG	H	IHC; WB; E	100 ug	\$365
Agouti-Related Protein (Mouse)	MO15105	Rat IgG	M	IHC; WB; E	500 ug	\$325
Agtrin	MO15044	Mouse IgG	R	WB; E	50 ug 100 ug	\$115 \$205
Amylin Peptide	MO20003	Mouse IgG	H	IHC	100 ul	\$150
APJ (Apelin Receptor)	RA14111	Rabbit IgG	R	ICC; IHC	50 ul 100 ul 100 ug Blocking Peptide	\$190 \$345 \$95
APJ (Apelin Receptor)	MO15011	Mouse IgG	H	IHC	500 ug	\$325
ApoE	MO25042	Mouse IgG	H	IHC; WB; E	100 ul	\$325
BDNF	CH15000	Chicken IgY	H; R	IHC; WB; E	100 ug	\$365
BMP-3b/GDF-10	GT15166	Goat IgG	H	IHC; WB; E	100 ug	\$365
c-Kit/CD117	RA14132	Rabbit IgG	H; M; R	IF; IHC; FC	100 ul	\$350
C-Peptide	RA18034	Rabbit IgG	H; M; R	IHC	100 ul	\$325
C-Reactive Protein (Human)	GT15084	Sheep IgG	H	IHC; WB; E	100 ug	\$365
C-Reactive Protein (Mouse)	GT15090	Goat IgG	M	IHC; WB; E	100 ug	\$365
C-Reactive Protein (Rat)	MO15033	Mouse IgG	R	IHC; WB; E	100 ug	\$225
C-Reactive Protein (Rat)	GT15086	Goat IgG	R	IHC; WB; E	100 ug	\$365
CART	MO15119	Mouse IgG	H	IHC; WB; E	500 ug	\$325

FOR RESEARCH USE ONLY

NEUROMICS REAGENTS ARE FOR IN VITRO AND CERTAIN NON-HUMAN IN VIVO EXPERIMENTAL USE ONLY AND NOT INTENDED FOR USE IN ANY HUMAN CLINICAL INVESTIGATION, DIAGNOSIS, PROGNOSIS, OR TREATMENT. THE ABOVE ANALYSES ARE MERELY TYPICAL GUIDES. THEY ARE NOT TO BE CONSTRUED AS BEING SPECIFICATIONS. ALL OF THE ABOVE INFORMATION IS, TO THE BEST OF OUR KNOWLEDGE, TRUE AND ACCURATE. HOWEVER, SINCE THE CONDITIONS OF USE ARE BEYOND OUR CONTROL, ALL RECOMMENDATIONS OR SUGGESTIONS ARE MADE WITHOUT GUARANTEE, EXPRESS OR IMPLIED, ON OUR PART. WE DISCLAIM ALL LIABILITY IN CONNECTION WITH THE USE OF THE INFORMATION CONTAINED HEREIN OR OTHERWISE, AND ALL SUCH RISKS ARE ASSUMED BY THE USER. WE FURTHER EXPRESSLY DISCLAIM ALL WARRANTIES OF MERCHANTABILITY AND FITNESS FOR A PARTICULAR PURPOSE. -V2-01/13

www.neuromics.com

Neuromics Antibodies • 5325 West 74th Street, Suite 8 • Edina, MN 55439
phone 866-350-1500 • fax 612-677-3976 • e-mail pshuster@neuromics.com

Name	Catalog #	Type	Species	Applications	Size	Price
CCK A Receptor	RA15049	Rabbit IgG	H; M; R	IHC; WB	50 ug 100 ul @ 2 mgs/ml	\$245 \$95
CCR1	MO15088	Mouse IgG	H	IHC; FC	100 ug	\$155
CCR5	MO15077	Mouse IgG	H	IHC; FC	100 ug	\$155
CCR6	MO15087	Mouse IgG	H	IHC; FC	100 ug	\$155
ChREBP	RA25053	Rabbit IgG	H; M; R	IF; IHC; WB	100 ul	\$285
CD39	GP10103	Guinea Pig IgG	R	IHC	150 ul 50 ul	\$395 \$175
CNTF	GT15028	Goat IgG	R	IHC; WB; E	100 ug	\$365
CNTF Receptor Alpha	GT15029	Goat IgG	R	IHC; WB; E	100 ug	\$365
CXCL8/IL-8	GT15156	Goat IgG	H	IHC; WB; E	100 ug	\$365
CXCR1/IL-8 RA	MO15072	Mouse IgG	H	IHC; FC	100 ug	\$155
CXCR2/IL-8 RB	MO15073	Mouse IgG	H	IHC; FC	100 ug	\$155
CXCR4	MO15022	Mouse IgG	H	IHC; FC	500 ug	\$325
Cathepsin S	GT15198	Goat IgG	H	IHC; WB; IP; E	100 ug	\$365
Dinitrophenol (DNP)	GT19002	Goat IgG	B; Ca; H; M; P; Pr; R	WB	100 ul	\$295
Met-Enkephalin	RA21006	Rabbit IgG	R	ICC; IF	50 ug	\$155
Frk	MO15104	Mouse IgG	H	IHC; E	100 ug	\$255
Galectin-3 (LGAS3)	MO22117	Mouse IgG	B; H; M; R	IF; IHC; WB	100 ul	\$225
gp130/CD130	GT15072	Goat IgG	M	WB; E	100 ug	\$345
gp130/CD130	MO15024	Rat IgG	M	IHC; WB; FC	100 ug	\$255
GAD1/GAD67	GT15142	Goat IgG	H; M; R	IHC; WB; E	100 ug	\$365
GAD2/GAD65	GT15125	Goat IgG	H	IHC; WB; E	100 ug	\$365
GAPDH	MO25038	Mouse IgM	B; C; Ch; H; M; P; R	IHC; WB	500 ul	\$285
GDF-3	GT15176	Goat IgG	M	IHC; WB; E	100 ug	\$365
Glucagon	MO15083	Rat IgG	H; M	IHC; FC	100 ug	\$215
GLUT1	RA25078	Rabbit IgG	B; H; M; Pr; R; Rb	ICC; IF; IHC; WB	100 ul	\$315
GLUT10	RA19061	Rabbit IgG	H	IHC; WB	100 ul	\$250
Gpihpb1	RA25016	Rabbit IgG	M; R	WB	100 ul	\$245
HES-1	GT15172	Goat IgG	H; M; R	IHC; WB; E	100 ug	\$365
HMGA2	RA30058	Goat IgG	H	IHC	50 ug	\$395
HSP60 (D307)	RA18029	Rabbit IgG	H; M; Pr; R	IF; IHC; WB; FC	100 ul	\$325

FOR RESEARCH USE ONLY

NEUROMICS REAGENTS ARE FOR IN VITRO AND CERTAIN NON-HUMAN IN VIVO EXPERIMENTAL USE ONLY AND NOT INTENDED FOR USE IN ANY HUMAN CLINICAL INVESTIGATION, DIAGNOSIS, PROGNOSIS, OR TREATMENT. THE ABOVE ANALYSES ARE MERELY TYPICAL GUIDES. THEY ARE NOT TO BE CONSTRUED AS BEING SPECIFICATIONS. ALL OF THE ABOVE INFORMATION IS, TO THE BEST OF OUR KNOWLEDGE, TRUE AND ACCURATE. HOWEVER, SINCE THE CONDITIONS OF USE ARE BEYOND OUR CONTROL, ALL RECOMMENDATIONS OR SUGGESTIONS ARE MADE WITHOUT GUARANTEE, EXPRESS OR IMPLIED, ON OUR PART. WE DISCLAIM ALL LIABILITY IN CONNECTION WITH THE USE OF THE INFORMATION CONTAINED HEREIN OR OTHERWISE, AND ALL SUCH RISKS ARE ASSUMED BY THE USER. WE FURTHER EXPRESSLY DISCLAIM ALL WARRANTIES OF MERCHANTABILITY AND FITNESS FOR A PARTICULAR PURPOSE.-V2-01/13

www.neuromics.com

Neuromics Antibodies • 5325 West 74th Street, Suite 8 • Edina, MN 55439
phone 866-350-1500 • fax 612-677-3976 • e-mail pshuster@neuromics.com

Name	Catalog #	Type	Species	Applications	Size	Price
IGF-1 R	MO15074	Mouse IgG	H	IHC; WB	500 ug 100 ug	\$325 \$155
IL-1 R1	GT15109	Goat IgG	M	IHC; WB; E	100 ug	\$365
IL-1 Alpha/IL-F1	GT15101	Goat IgG	M	IHC; WB; E	100 ug	\$365
IL-1 Beta	GT15102	Goat IgG	M	IHC; WB; E	100 ug	\$365
IL-2	MO15069	Mouse IgG	H	IHC	100 ug	\$155
IL-2 (Rat)	GT15155	Goat IgG	R	IHC; WB	100 ug	\$365
IL-2 R alpha/CD35	MO15070	Mouse IgG	H	IHC; WB	100 ug	\$155
IL-4	MO15071	Mouse IgG	H	IHC; WB; E	100 ug	\$155
IL-6 (Mouse)	GT15103	Goat IgG	M	E; NB	100 ug	\$365
IL-6 (Rat)	GT15106	Goat IgG	R	IHC; WB; E	100 ug	\$365
Insulin	RA20056	Rabbit IgG	R	IF; IHC	100 ul	\$235
Insulysin/IDE	GT15171	Goat IgG	H	WB; IP; E	100 ug	\$365
Insulysin/IDE	MO15081	Mouse IgG	H; M; Pr; R	WB; FC	100 ug	\$235
LDL Receptor	RA25068	Rabbit IgG	H; M	IHC; WB	100 ul	\$285
LIF, human	MO16101	Mouse IgG	H	WB	100 ug	\$399
LIF, mouse	MO16102	Mouse IgG	M	WB	100 ug	\$399
LepRb/OBRb	CH14104	Chicken IgY	R	IF; IHC	100 ul 100 ug Blocking Protein	\$275 \$95
Leptin	GT15011	Goat IgG	H; M; R	IHC; WB; E	100 ug	\$365
Leptin (Human)	MO15019	Mouse IgG	H	IHC; E	500 ug	\$325
Leptin	RA30011	Rabbit IgG	M	IHC; WB; E	50 ug	\$425
Leptin Receptor	GT15059	Goat IgG	H	IHC; WB; E	100 ug	\$365
Leptin Receptor	GT15012	Goat IgG	M; R	IHC; WB; E	100 ug	\$365
Lipin 1 (LPIN1)	RA25079	Rabbit IgG	H; M; R	IHC; WB	100 ul	\$315
Malondialdehyde (MDA)	GT19003	Goat IgG	H	WB	100 ul	\$295
Mitofusion 2/MFN2	RA26001	Rabbit IgG	H; M; R; Rb	IHC; WB	100 ul	\$375
NPY Y1 Receptor	RA24506	Rabbit IgG	H; M; R	ICC; IHC; WB	100 ul	\$395
NPY Y2 Receptor	RA14112	Rabbit IgG	M; R	IHC	50 ul 100 ul 100 ug Blocking Peptide	\$210 \$380 \$75
NPY Y2 Receptor-C/N Teminus	RA14136	Rabbit IgG	M; R	IHC	50 ul 100 ul	\$210 \$380
NeuroD1	GT15231	Goat IgG	H; M	ICC; WB	100 ug	\$365

FOR RESEARCH USE ONLY

NEUROMICS REAGENTS ARE FOR IN VITRO AND CERTAIN NON-HUMAN IN VIVO EXPERIMENTAL USE ONLY AND NOT INTENDED FOR USE IN ANY HUMAN CLINICAL INVESTIGATION, DIAGNOSIS, PROGNOSIS, OR TREATMENT. THE ABOVE ANALYSES ARE MERELY TYPICAL GUIDES. THEY ARE NOT TO BE CONSTRUED AS BEING SPECIFICATIONS. ALL OF THE ABOVE INFORMATION IS, TO THE BEST OF OUR KNOWLEDGE, TRUE AND ACCURATE. HOWEVER, SINCE THE CONDITIONS OF USE ARE BEYOND OUR CONTROL, ALL RECOMMENDATIONS OR SUGGESTIONS ARE MADE WITHOUT GUARANTEE, EXPRESS OR IMPLIED, ON OUR PART. WE DISCLAIM ALL LIABILITY IN CONNECTION WITH THE USE OF THE INFORMATION CONTAINED HEREIN OR OTHERWISE, AND ALL SUCH RISKS ARE ASSUMED BY THE USER. WE FURTHER EXPRESSLY DISCLAIM ALL WARRANTIES OF MERCHANTABILITY AND FITNESS FOR A PARTICULAR PURPOSE. -V2-01/13

www.neuromics.com

Neuromics Antibodies • 5325 West 74th Street, Suite 8 • Edina, MN 55439
phone 866-350-1500 • fax 612-677-3976 • e-mail pshuster@neuromics.com

Name	Catalog #	Type	Species	Applications	Size	Price
Neurotensin Receptor 1 (NTS1)	GP14020	Guinea Pig IgG	R	ICC; IHC	50 ul	\$190
					100 ul	\$345
					100 ug Blocking Peptide	\$95
Neurotensin Receptor 2 (NTS2)	RA17100	Rabbit IgG	R	ICC; IHC	100 ul	\$315
Neurotensin Receptor 3 (NTS3)/Sortilin	GT15237	Goat IgG	H	IHC; WB; E; NB	100 ug	\$365
Neurotensin Receptor 3 (NTS3)/Sortilin	GT15238	Goat IgG	M	IHC; WB; E; NB	100 ug	\$365
Neurotensin Receptor 3 (NTS3)/Sortilin	GT15237	Goat IgG	H	IHC; WB; E; NB	100 ug	\$365
Omi/HtrA2	MO15078	Mouse IgG	H	IHC; WB	100 ug	\$255
Orexin B	MO15114	Mouse IgG	H; M	IHC	100 ug	\$325
PDK1	RA25059	Rabbit IgG	H	WB	100 ul	\$285
PDX1/IPF1	GT15187	Goat IgG	H	IHC; WB; E	100 ug	\$365
Peripherin	CH22111	Chicken IgY	Ca; H; M; R	IHC	100 ul	\$245
Peripherin	CH23016	Chicken IgY	H; M	IHC	100 ul	\$89
PIGF	RA26003	Rabbit IgG	R	IHC; WB	100 ul	\$375
RAGE	GT15030	Goat IgG	M	IHC; WB; E	100 ug	\$365
RAGE	MO15029	Rat IgG	M; R	IHC; WB; E	500 ug	\$325
mRELM alpha	RA19062	Rabbit IgG	H; M	WB	100 ul	\$175
Renin Propeptide	MO15101	Mouse IgG	H; Pr	IHC; WB; E	100 ug	\$255
Resistin	GT15031	Goat IgG	M	IHC; WB; E	100 ug	\$365
Resistin	RA19059	Rabbit IgG	H	WB	100 ul	\$175
SHIP2	RA18031	Rabbit IgG	H; R	IF; WB; FC; IP	100 ul	\$325
SNX26	GT41013	Goat IgG	H	IHC	100 ug	\$250
					100 ug Blocking Peptide	\$145
Substance P-Pure	GP14110	Guinea Pig IgG	H; M; R	IHC	100 ul	\$350
					20 ug Blocking Peptide	\$95
Substance P	GP14103	Guinea Pig IgG	H; M; R	IHC	50 ul	\$175
					150 ul	\$395
					20 ug Blocking Peptide	\$95
Substance P	RA20064	Rabbit IgG	R	IHC	100 ul	\$240
Substance P	MO15094	Mouse IgG	H; M; R	IHC; E	100 ug	\$255
					20 ug Blocking Peptide	\$95
Survivin	RA19022	Rabbit IgG	H; M; R	WB	100 ug	\$225
TCF4 (C48H11)	RA18032	Rabbit IgG	Ch; H; M; R	WB; IP	100 ul	\$325
TCF4 (C9b9)	RA18033	Rabbit IgG	H; M; R	IF; WB; IP	100 ul	\$325

FOR RESEARCH USE ONLY

NEUROMICS REAGENTS ARE FOR IN VITRO AND CERTAIN NON-HUMAN IN VIVO EXPERIMENTAL USE ONLY AND NOT INTENDED FOR USE IN ANY HUMAN CLINICAL INVESTIGATION, DIAGNOSIS, PROGNOSIS, OR TREATMENT. THE ABOVE ANALYSES ARE MERELY TYPICAL GUIDES. THEY ARE NOT TO BE CONSTRUED AS BEING SPECIFICATIONS. ALL OF THE ABOVE INFORMATION IS, TO THE BEST OF OUR KNOWLEDGE, TRUE AND ACCURATE. HOWEVER, SINCE THE CONDITIONS OF USE ARE BEYOND OUR CONTROL, ALL RECOMMENDATIONS OR SUGGESTIONS ARE MADE WITHOUT GUARANTEE, EXPRESS OR IMPLIED, ON OUR PART. WE DISCLAIM ALL LIABILITY IN CONNECTION WITH THE USE OF THE INFORMATION CONTAINED HEREIN OR OTHERWISE, AND ALL SUCH RISKS ARE ASSUMED BY THE USER. WE FURTHER EXPRESSLY DISCLAIM ALL WARRANTIES OF MERCHANTABILITY AND FITNESS FOR A PARTICULAR PURPOSE. -V2-01/13

www.neuromics.com

Neuromics Antibodies • 5325 West 74th Street, Suite 8 • Edina, MN 55439
phone 866-350-1500 • fax 612-677-3976 • e-mail pshuster@neuromics.com

Name	Catalog #	Type	Species	Applications	Size	Price
TNF alpha	GT15113	Goat IgG	M	ICC; IHC; WB; E	100 ug	\$365
TRPM6 (Chak2)	GP14108	Guinea Pig IgG	R	IHC	100 ul	\$295
TrkB	MO15025	Rat IgG	M	IHC; WB; E	500 ug	\$325
TrkB	GT15080	Goat IgG	M	IHC; WB; E	100 ug	\$365
TrkB	MO15042	Mouse IgG	H	WB; FC; E	500 ug	\$325
Tuj 1 (Neuron-specific class III beta-tubulin)	MO15013	Mouse IgG	H	ICC; IF; IHC; WB	100 ug	\$265
Tuj 1 (Neuron-specific class III beta-tubulin)	CH23005	Chicken IgY	H; M	ICC; IHC; WB	100 ul	\$99
VEGF	MO15067	Mouse IgG	H	IHC; WB; E	100 ug 500 ug	\$89 \$325
VEGF R2 (FLK1/KDR)	RA25011	Rabbit IgG	H; M; R	IHC; WB	100 ul	\$385
VIP	RA20071	Rabbit IgG	GP; M; Pr; R	IHC	100 ul	\$255

Diabetes and Obesity Research Recombinant Proteins

Name	Catalog #	Type	Species	Applications	Size	Price
Agouti Related Protein	PR15056-2	Protein	H; R		2 ug	\$99
BDNF	PR15020	Protein	H		5 ug 25 ug	\$220 \$660
BDNF	PR27080-2	Protein	H		2 ug 10 ug	\$75 \$175
C-Reactive Protein	PR27090-500	Protein	H		500 ug 1 mg	\$225 \$350
CNTF	PR27005-5	Protein	H		5 ug 20 ug	\$75 \$175
CXCL7/NAP-2	PR27118-2	Protein	H		2 ug 10 ug	\$75 \$175
Galectin-1 (LGAS1)	PR27143-10	Protein	H		10 ug 50 ug 1 mg	\$95 \$175 \$1,450
IGF-I, CF	PR15022CF	Protein	H		50 ug 250 ug	\$170 \$545
IGF-I, CF	PR15023CF	Protein	M		50 ug	\$175
IGF-II	PR15045CF	Protein	M		50 ug	\$175
IGFBP-3, CF	PR15046CF	Protein	M		25 ug	\$315
IGFBP-4, CF	PR15047CF	Protein	H		25 ug	\$315

FOR RESEARCH USE ONLY

NEUROMICS REAGENTS ARE FOR IN VITRO AND CERTAIN NON-HUMAN IN VIVO EXPERIMENTAL USE ONLY AND NOT INTENDED FOR USE IN ANY HUMAN CLINICAL INVESTIGATION, DIAGNOSIS, PROGNOSIS, OR TREATMENT. THE ABOVE ANALYSES ARE MERELY TYPICAL GUIDES. THEY ARE NOT TO BE CONSTRUED AS BEING SPECIFICATIONS. ALL OF THE ABOVE INFORMATION IS, TO THE BEST OF OUR KNOWLEDGE, TRUE AND ACCURATE. HOWEVER, SINCE THE CONDITIONS OF USE ARE BEYOND OUR CONTROL, ALL RECOMMENDATIONS OR SUGGESTIONS ARE MADE WITHOUT GUARANTEE, EXPRESS OR IMPLIED, ON OUR PART. WE DISCLAIM ALL LIABILITY IN CONNECTION WITH THE USE OF THE INFORMATION CONTAINED HEREIN OR OTHERWISE, AND ALL SUCH RISKS ARE ASSUMED BY THE USER. WE FURTHER EXPRESSLY DISCLAIM ALL WARRANTIES OF MERCHANTABILITY AND FITNESS FOR A PARTICULAR PURPOSE. -V2-01/13

www.neuromics.com

Neuromics Antibodies • 5325 West 74th Street, Suite 8 • Edina, MN 55439
phone 866-350-1500 • fax 612-677-3976 • e-mail pshuster@neuromics.com

Name	Catalog #	Type	Species	Applications	Size	Price
IL-6	PR27107-5	Protein	H		5 ug 20 ug	\$75 \$175
IL-6, His Tagged	PR27108-10	Protein	H		10 ug 50 ug	\$75 \$175
Insulin-Pig	PR27096-25	Protein	P		25 mg 250mg	\$110 \$355
pro-Insulin	PR15081-50	Protein	H; R		50 ug	\$325
Leptin His Tag-Human	PR27098-5	Protein	H		5 ug 25 ug	\$75 \$185
Leptin qA-Human	PR27103-20	Protein	H		20 ug 100 ug	\$75 \$185
Leptin tA-Human	PR2102-20	Protein	H		200 ug 1 mg	\$75 \$185
Leptin-Chicken	PR27101-100	Protein	Ch; H; M; P		100 ug 200 ug	\$365 \$490
Leptin-Human	PR27097-200	Protein	H		200 ug 1 mg	\$75 \$185
Leptin-Mouse	PR27099-200	Protein	M		200 ug 1 mg	\$75 \$185
Leptin-Pig	PR27137-100	Protein	P		100 ug 200 ug	\$235 \$355
Leptin-Rat	PR27100-100	Protein	R		100 ug 200 ug	\$235 \$355
Leukemia Inhibitory Factor (LIF), human	PR16101	Protein	H		5 ug 10 ug	\$295 \$435
Leukemia Inhibitory Factor (LIF), mouse	PR16102	Protein	M		5 ug 10 ug	\$295 \$435
Leukemia Inhibitory Factor (LIF), rat	PR16103	Protein	R		5 ug 10 ug	\$295 \$435
Neurotensin Receptor 3 (NTS3)/Sortilin, Carrier Free	PR15080CF-50	Protein	H; R		50 ug	\$315
TNF-alpha	PR27146-10	Protein	H		10 ug 50 ug	\$85 \$185
TrkB	PR15052-50	Protein	H		50 ug	\$325
TrkB, Carrier Free	PR15052CF-50	Protein	H		50 ug	\$325
VEGF	PR15028	Protein	C		10 ug	\$315
VEGF, CF	PR15028CF	Protein	C		10 ug	\$315
VEGF 120	PR15033	Protein	M		25 ug 5 ug	\$825 \$255
VEGF 121	PR15029	Protein	H		25 ug 5 ug	\$905 \$280

FOR RESEARCH USE ONLY

NEUROMICS REAGENTS ARE FOR IN VITRO AND CERTAIN NON-HUMAN IN VIVO EXPERIMENTAL USE ONLY AND NOT INTENDED FOR USE IN ANY HUMAN CLINICAL INVESTIGATION, DIAGNOSIS, PROGNOSIS, OR TREATMENT. THE ABOVE ANALYSES ARE MERELY TYPICAL GUIDES. THEY ARE NOT TO BE CONSTRUED AS BEING SPECIFICATIONS. ALL OF THE ABOVE INFORMATION IS, TO THE BEST OF OUR KNOWLEDGE, TRUE AND ACCURATE. HOWEVER, SINCE THE CONDITIONS OF USE ARE BEYOND OUR CONTROL, ALL RECOMMENDATIONS OR SUGGESTIONS ARE MADE WITHOUT GUARANTEE, EXPRESS OR IMPLIED, ON OUR PART. WE DISCLAIM ALL LIABILITY IN CONNECTION WITH THE USE OF THE INFORMATION CONTAINED HEREIN OR OTHERWISE, AND ALL SUCH RISKS ARE ASSUMED BY THE USER. WE FURTHER EXPRESSLY DISCLAIM ALL WARRANTIES OF MERCHANTABILITY AND FITNESS FOR A PARTICULAR PURPOSE. -V2-01/13

www.neuromics.com

Neuromics Antibodies • 5325 West 74th Street, Suite 8 • Edina, MN 55439
phone 866-350-1500 • fax 612-677-3976 • e-mail pshuster@neuromics.com

Name	Catalog #	Type	Species	Applications	Size	Price
VEGF 162	PR15030	Protein	H		25 ug	\$315
VEGF 162, CF	PR15030CF	Protein	H		25 ug	\$315
VEGF 164	PR15034	Protein	M		25 ug 5 ug	\$825 \$255
VEGF 164	PR15035	Protein	R		10 ug 50 ug	\$315 \$905
VEGF 164, CF	PR15034CF	Protein	M		5 ug 25 ug	\$255 \$825
VEGF 164, CF	PR15035CF	Protein	R		50 ug 10 ug	\$905 \$315
VEGF 165	PR15031	Protein	H		10 ug 50 ug	\$280 \$905
VEGF 165, CF	PR15031CF	Protein	H		50 ug 10 ug	\$905 \$280
VEGF/PIGF Heterodimer	PR15032	Protein	H		5 ug	\$315
VEGF/PIGF Heterodimer, CF	PR15032CF	Protein	H		5 ug	\$315
Visfatin (PBEF), His Tagged	PR27140-5	Protein	H		5 ug 25 ug	\$85 \$175
Zinc-alpha 2 glycoprotein (ZAG2)	PR27149-5	Protein	H		5 ug 10 ug	\$85 \$175

FOR RESEARCH USE ONLY

NEUROMICS REAGENTS ARE FOR IN VITRO AND CERTAIN NON-HUMAN IN VIVO EXPERIMENTAL USE ONLY AND NOT INTENDED FOR USE IN ANY HUMAN CLINICAL INVESTIGATION, DIAGNOSIS, PROGNOSIS, OR TREATMENT. THE ABOVE ANALYSES ARE MERELY TYPICAL GUIDES. THEY ARE NOT TO BE CONSTRUED AS BEING SPECIFICATIONS. ALL OF THE ABOVE INFORMATION IS, TO THE BEST OF OUR KNOWLEDGE, TRUE AND ACCURATE. HOWEVER, SINCE THE CONDITIONS OF USE ARE BEYOND OUR CONTROL, ALL RECOMMENDATIONS OR SUGGESTIONS ARE MADE WITHOUT GUARANTEE, EXPRESS OR IMPLIED, ON OUR PART. WE DISCLAIM ALL LIABILITY IN CONNECTION WITH THE USE OF THE INFORMATION CONTAINED HEREIN OR OTHERWISE, AND ALL SUCH RISKS ARE ASSUMED BY THE USER. WE FURTHER EXPRESSLY DISCLAIM ALL WARRANTIES OF MERCHANTABILITY AND FITNESS FOR A PARTICULAR PURPOSE. -V2-01/13

www.neuromics.com

Neuromics Antibodies • 5325 West 74th Street, Suite 8 • Edina, MN 55439
phone 866-350-1500 • fax 612-677-3976 • e-mail pshuster@neuromics.com