



---

|                            |  |                            |  |
|----------------------------|--|----------------------------|--|
| <b>Catalog Number:</b>     | RA25054  | <b>Host:</b>               | Rabbit   |
| <b>Product Type:</b>       | Affinity Purified Antibody   | <b>Species Reactivity:</b> | Human, Rat, Primate  |
| <b>Immunogen Sequence:</b> | A peptide derived from the human Ogg1 (within amino acids 1-100).  | <b>Format:</b>             | Liquid. 100 ul. PBS and .10% sodium azide.. Concentration 1.0 mg/ml. |
| <b>Applications:</b>       | Immunohistochemistry- 1:1000 (Paraffin embedded); 1:25-1:100 (frozen)<br>Western Blot 1:500-1:1000   |                            |  |
|                            | Dilutions listed only as a recommendation. Optimal dilution should be determined by investigator.  |                            |  |
| <b>Storage:</b>            | Store frozen. Aliquot as undiluted antisera and immediately place at -20°C. Antisera may have become trapped in top of vial during shipping. Centrifugation of vial is recommended before opening. Stable for at least 6 months at -20°C. Repeated freeze/thaw cycles compromise the integrity of the antiserum. |                            |  |

---

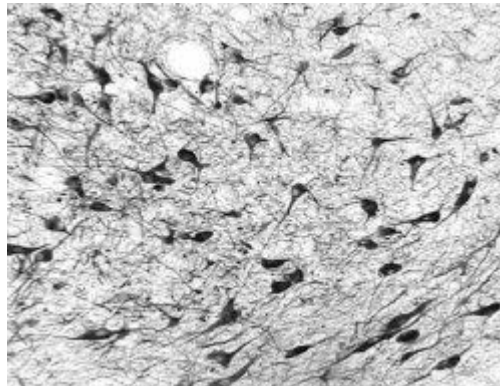
### Application Notes

This antibody may be used in Western blot where it recognizes a band at ~39 kDa, representing Ogg1 (tested in human). For immunohistochemistry it has been tested on human and primate. It may also work on rat in immunohistochemistry- Frozen.

#### Western Blot:

Jurkat whole cell extracts.

*Image: Ogg1 staining of formaldehyde fixed frozen sections of the substantia nigra from a Rhesus macaque (Macaca mulatta). Photo courtesy of Glen Kisby, Oregon Health Sciences University.*



**FOR RESEARCH USE ONLY**

NEUROMICS' REAGENTS ARE FOR IN VITRO AND CERTAIN NON-HUMAN IN VIVO EXPERIMENTAL USE ONLY AND NOT INTENDED FOR USE IN ANY HUMAN CLINICAL INVESTIGATION, DIAGNOSIS, PROGNOSIS, OR TREATMENT. THE ABOVE ANALYSES ARE MERELY TYPICAL GUIDES. THEY ARE NOT TO BE CONSTRUED AS BEING SPECIFICATIONS. ALL OF THE ABOVE INFORMATION IS, TO THE BEST OF OUR KNOWLEDGE, TRUE AND ACCURATE. HOWEVER, SINCE THE CONDITIONS OF USE ARE BEYOND OUR CONTROL, ALL RECOMMENDATIONS OR SUGGESTIONS ARE MADE WITHOUT GUARANTEE, EXPRESS OR IMPLIED, ON OUR PART. WE DISCLAIM ALL LIABILITY IN CONNECTION WITH THE USE OF THE INFORMATION CONTAINED HEREIN OR OTHERWISE, AND ALL SUCH RSKS ARE ASSUMED BY THE USER. WE FURTHER EXPRESSLY DISCLAIM ALL WARRANTIES OF MERCHANTABILITY AND FITNESS FOR A PARTICULAR PURPOSE. V3-01/13