

NEUROMICS

VEGF R2 (FLK1/KDR)



Data Sheet

Catalog Number: RA25011

Product Type: Protein A Purified Antibody

Immunogen Sequence: Synthetic peptide derived from the C-terminus of the precursor form of the human VEGF Receptor 2

Applications: Immunohistochemistry – 1:10-1:500
Immunohistochemistry-Frozen – 1:50-1:100
Immunohistochemistry-Paraffin – 1:50-1:100

Dilutions listed only as a recommendation. Optimal dilution should be determined by investigator.

For IHC-P: Sections require high temperature antigen unmasking with 10 mM citrate buffer, pH 6.0 prior to immunostaining.

Storage: Store at 4°C. Do not freeze.

- References:**
1. Ankoma-Sey V et al. Coordinated induction of VEGF receptors in mesenchymal cell types during rat hepatic wound healing. *Oncogene* 17:115-21 (1998).
 2. Ergun S et al. Vascular endothelial growth factor and its receptors in normal human testicular tissue. *Mol Cell Endocrinol* 131:9-20 (1997).
 3. Quinn TP et al. Fetal liver kinase 1 is a receptor for vascular endothelial growth factor and is selectively expressed in vascular endothelium. *Proc Natl Acad Sci U S A* 90:7533-7 (1993).

Host: Rabbit

Species Reactivity: Human, Rat and Mouse

Format: Affinity purified antibody in PBS buffer with sodium azide preservative.
Concentration 0.1 mg/ml

Application Notes

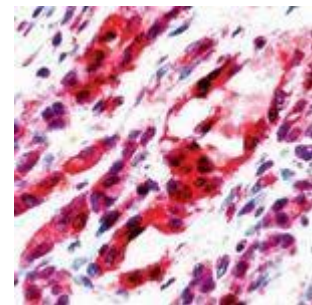
Specificity:

This antibody reacts with a 180 kDa protein, known as Flk-1, KDR or vascular endothelial growth factor receptor 2 (VEGFR2). Flk-1 is a cell membrane receptor kinase. Flk-1 is a high affinity receptor for vascular endothelial growth factor and is putatively involved in the growth of endothelial cells and angiogenesis

Cellular Location

Type I membrane protein.

Image: Immunohistochemistry-Paraffin: VEGF R2 Antibody – Analysis of human angiosarcoma



FOR RESEARCH USE ONLY

NEUROMICS' REAGENTS ARE FOR IN VITRO AND CERTAIN NON-HUMAN IN VIVO EXPERIMENTAL USE ONLY AND NOT INTENDED FOR USE IN ANY HUMAN CLINICAL INVESTIGATION, DIAGNOSIS, PROGNOSIS, OR TREATMENT. THE ABOVE ANALYSES ARE MERELY TYPICAL GUIDES. THEY ARE NOT TO BE CONSTRUED AS BEING SPECIFICATIONS. ALL OF THE ABOVE INFORMATION IS, TO THE BEST OF OUR KNOWLEDGE, TRUE AND ACCURATE. HOWEVER, SINCE THE CONDITIONS OF USE ARE BEYOND OUR CONTROL, ALL RECOMMENDATIONS OR SUGGESTIONS ARE MADE WITHOUT GUARANTEE, EXPRESS OR IMPLIED, ON OUR PART. WE DISCLAIM ALL LIABILITY IN CONNECTION WITH THE USE OF THE INFORMATION CONTAINED HEREIN OR OTHERWISE, AND ALL SUCH RISKS ARE ASSUMED BY THE USER. WE FURTHER EXPRESSLY DISCLAIM ALL WARRANTIES OF MERCHANTABILITY AND FITNESS FOR A PARTICULAR PURPOSE. V3-01/13

www.neuromics.com

Neuromics • 5325 West 74th Street, Suite 8 • Edina, MN 55439
phone 866-350-1500 • fax 612-677-3976 • e-mail pshuster@neuromics.com