



Catalog Number:	RA25038	Host:	Rabbit
Product Type:	Affinity Purified Antibody	Species Reactivity:	Human, Mouse and Rat
Immunogen Sequence:	Laminin isolated from mouse EHS tumor. Reference Sequence: P19137.	Format:	Liquid. PBS with 0.05% sodium azide. Concentration: 1 mg/ml.
Applications:	Western Blot* Immunohistochemistry: (Paraffin and Frozen)*		

*Optimal dilution should be determined by investigator.

Storage: Store frozen. Aliquot as undiluted antisera and immediately place at -20°C. Antisera may have become trapped in top of vial during shipping. Centrifugation of vial is recommended before opening. Stable for at least 6 months at -20°C. Repeated freeze/thaw cycles compromise the integrity of the antiserum.

Application Notes

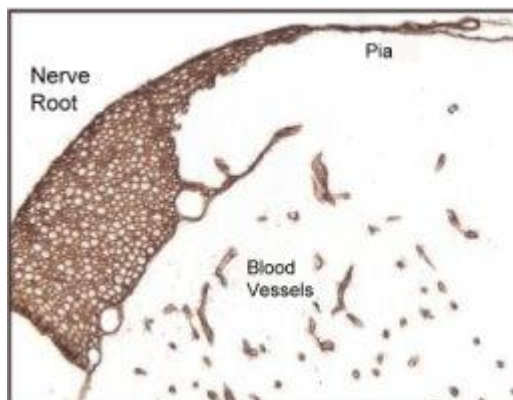
Positive Controls: Basement membranes (blood vessels of any tissue, tumors, nerve).

Immunohistochemistry:

The fixation is routine paraformaldehyde or formalin fixation of tissue prior to paraffin embedding. However, the staining procedure must include an antigen retrieval step pretreating the deparaffinized sections with pepsin. This is required for all laminin antibodies used on paraffin tissue.

Mount paraffin sections on Fisher Plus slides. Bake for >2 hours at 50.

Image: Laminin staining of rat spinal cord and dorsal root paraformaldehyde/paraffin-embedded tissue. Pepsin antigen retrieval was performed on this tissue sample.



FOR RESEARCH USE ONLY

NEUROMICS' REAGENTS ARE FOR IN VITRO AND CERTAIN NON-HUMAN IN VIVO EXPERIMENTAL USE ONLY AND NOT INTENDED FOR USE IN ANY HUMAN CLINICAL INVESTIGATION, DIAGNOSIS, PROGNOSIS, OR TREATMENT. THE ABOVE ANALYSES ARE MERELY TYPICAL GUIDES. THEY ARE NOT TO BE CONSTRUED AS BEING SPECIFICATIONS. ALL OF THE ABOVE INFORMATION IS, TO THE BEST OF OUR KNOWLEDGE, TRUE AND ACCURATE. HOWEVER, SINCE THE CONDITIONS OF USE ARE BEYOND OUR CONTROL, ALL RECOMMENDATIONS OR SUGGESTIONS ARE MADE WITHOUT GUARANTEE, EXPRESS OR IMPLIED, ON OUR PART. WE DISCLAIM ALL LIABILITY IN CONNECTION WITH THE USE OF THE INFORMATION CONTAINED HEREIN OR OTHERWISE, AND ALL SUCH RISKS ARE ASSUMED BY THE USER. WE FURTHER EXPRESSLY DISCLAIM ALL WARRANTIES OF MERCHANTABILITY AND FITNESS FOR A PARTICULAR PURPOSE. v2-01/13

Image: Detection of laminin (Green) in HeLa cells at a 1:50 dilution. Nuclei (Blue) were counterstained using Hoechst.

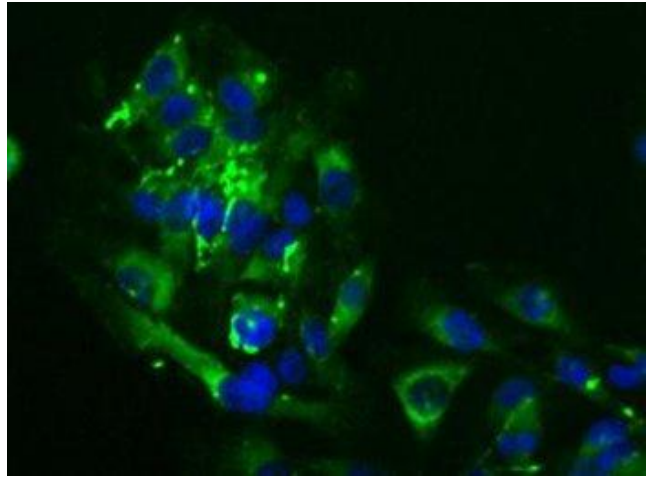
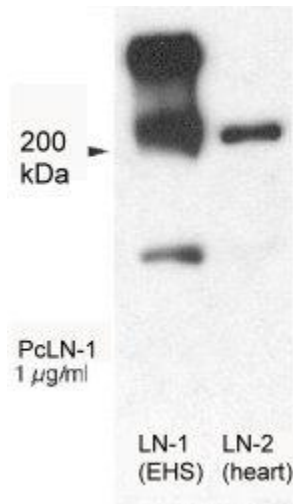


Image: Detection of laminin by Western Blot.



FOR RESEARCH USE ONLY

NEUROMICS' REAGENTS ARE FOR IN VITRO AND CERTAIN NON-HUMAN IN VIVO EXPERIMENTAL USE ONLY AND NOT INTENDED FOR USE IN ANY HUMAN CLINICAL INVESTIGATION, DIAGNOSIS, PROGNOSIS, OR TREATMENT. THE ABOVE ANALYSES ARE MERELY TYPICAL GUIDES. THEY ARE NOT TO BE CONSTRUED AS BEING SPECIFICATIONS. ALL OF THE ABOVE INFORMATION IS, TO THE BEST OF OUR KNOWLEDGE, TRUE AND ACCURATE. HOWEVER, SINCE THE CONDITIONS OF USE ARE BEYOND OUR CONTROL, ALL RECOMMENDATIONS OR SUGGESTIONS ARE MADE WITHOUT GUARANTEE, EXPRESS OR IMPLIED, ON OUR PART. WE DISCLAIM ALL LIABILITY IN CONNECTION WITH THE USE OF THE INFORMATION CONTAINED HEREIN OR OTHERWISE, AND ALL SUCH RSKS ARE ASSUMED BY THE USER. WE FURTHER EXPRESSLY DISCLAIM ALL WARRANTIES OF MERCHANTABILITY AND FITNESS FOR A PARTICULAR PURPOSE. v2-01/13

www.neuromics.com

Neuromics • 5325 West 74th Street, Suite 8 • Edina, MN 55439
phone 866-350-1500 • fax 612-677-3976 • e-mail pshuster@neuromics.com