



**Catalog Number:** MO22142

**Host:** Mouse

**Product Type:** Mouse Monoclonal IgG<sub>2a</sub>

**Species:** Human, Rat, Mouse, Porcine

**Immunogen Sequence:** Protein sequence 1-42, epitope is sequence 1-16

**Reactivity:**

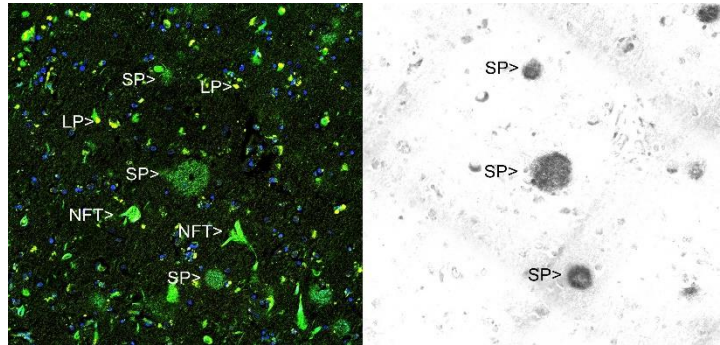
**Format:** 100 ul. Liquid. Affinity purified antibody in PBS with 10mM sodium azide as a preservative. Concentration of 1 mg/ml.

**Applications:** Immunofluorescence: 1:1,000  
Immunohistochemistry: 1:1,000  
Western Blot: 1:1,000-1:2,000

**Storage:** Dilutions listed as a recommendation. Optimal dilution should be determined by investigator. Antibody can also be aliquotted and stored frozen at -20° C in a manual defrost freezer for six months without detectable loss of activity. The antibody can be stored at 2° - 8° C for 1 month without detectable loss of activity. Avoid repeated freeze-thaw cycles.

### Application Notes.

*Image: Immunohistochemical analysis of paraffin-embedded Alzheimer's hippocampus using Thioflavin S (left panel) and MO22141 using the HRP-DAB staining technique. Left image shows a section stained with Thioflavin S, a fluorescent reagent which binds to both senile plaques (SP) and neurofibrillary tangles (NFT), the two hallmark lesions of Alzheimer's disease. Lipofuscin granules (LP) are seen in normal aging brain, but are autofluorescent and so can also be seen in this image. MO22141 show strong staining only of the senile plaques. The right image show MO22141 staining of an adjacent section, showing strong staining of the senile plaques, with more minor staining of blood vessels.*



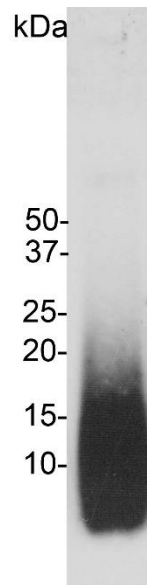
### FOR RESEARCH USE ONLY

NEUROMICS' REAGENTS ARE FOR IN VITRO AND CERTAIN NON-HUMAN IN VIVO EXPERIMENTAL USE ONLY AND NOT INTENDED FOR USE IN ANY HUMAN CLINICAL INVESTIGATION, DIAGNOSIS, PROGNOSIS, OR TREATMENT. THE ABOVE ANALYSES ARE MERELY TYPICAL GUIDES. THEY ARE NOT TO BE CONSTRUED AS BEING SPECIFICATIONS. ALL OF THE ABOVE INFORMATION IS, TO THE BEST OF OUR KNOWLEDGE, TRUE AND ACCURATE. HOWEVER, SINCE THE CONDITIONS OF USE ARE BEYOND OUR CONTROL, ALL RECOMMENDATIONS OR SUGGESTIONS ARE MADE WITHOUT GUARANTEE, EXPRESS OR IMPLIED, ON OUR PART. WE DISCLAIM ALL LIABILITY IN CONNECTION WITH THE USE OF THE INFORMATION CONTAINED HEREIN OR OTHERWISE, AND ALL SUCH RISKS ARE ASSUMED BY THE USER. WE FURTHER EXPRESSLY DISCLAIM ALL WARRANTIES OF MERCHANTABILITY AND FITNESS FOR A PARTICULAR PURPOSE. V1-05/2012

[www.neuromics.com](http://www.neuromics.com)

Neuromics Antibodies • 5325 West 74<sup>th</sup> Street, Suite 8 • Edina, MN 55439  
phone 866-350-1500 • fax 612-677-3976 • e-mail [psuster@neuromics.com](mailto:psuster@neuromics.com)

Image: Blot of amyloid beta peptide blotted with MO22141. MO22141 recognizes amyloid  $\beta$  peptide running at 5 kDa and amyloid beta aggregates.



## FOR RESEARCH USE ONLY

NEUROMICS' REAGENTS ARE FOR IN VITRO AND CERTAIN NON-HUMAN IN VIVO EXPERIMENTAL USE ONLY AND NOT INTENDED FOR USE IN ANY HUMAN CLINICAL INVESTIGATION, DIAGNOSIS, PROGNOSIS, OR TREATMENT. THE ABOVE ANALYSES ARE MERELY TYPICAL GUIDES. THEY ARE NOT TO BE CONSTRUED AS BEING SPECIFICATIONS. ALL OF THE ABOVE INFORMATION IS, TO THE BEST OF OUR KNOWLEDGE, TRUE AND ACCURATE. HOWEVER, SINCE THE CONDITIONS OF USE ARE BEYOND OUR CONTROL, ALL RECOMMENDATIONS OR SUGGESTIONS ARE MADE WITHOUT GUARANTEE, EXPRESS OR IMPLIED, ON OUR PART. WE DISCLAIM ALL LIABILITY IN CONNECTION WITH THE USE OF THE INFORMATION CONTAINED HEREIN OR OTHERWISE, AND ALL SUCH RISKS ARE ASSUMED BY THE USER. WE FURTHER EXPRESSLY DISCLAIM ALL WARRANTIES OF MERCHANTABILITY AND FITNESS FOR A PARTICULAR PURPOSE. V1-05/2012

---

[www.neuromics.com](http://www.neuromics.com)

Neuromics Antibodies • 5325 West 74<sup>th</sup> Street, Suite 8 • Edina, MN 55439  
phone 866-350-1500 • fax 612-677-3976 • e-mail [pshuster@neuromics.com](mailto:pshuster@neuromics.com)