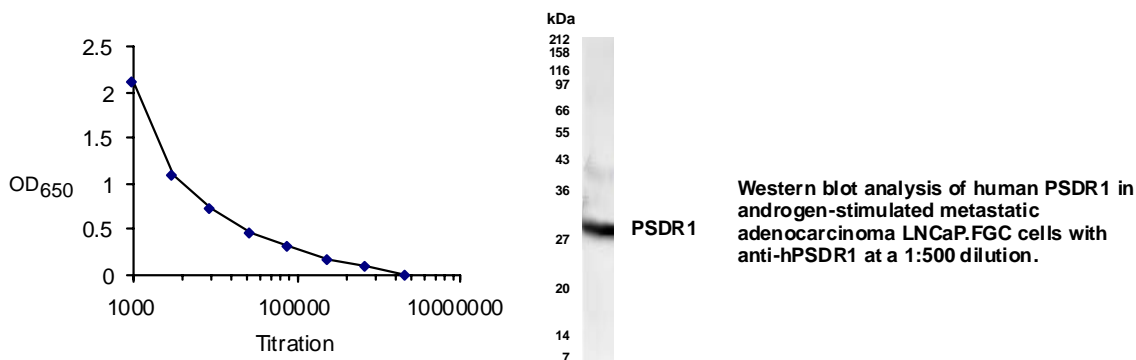


PSDR1 Polyclonal Antibody

- Catalog Number:** RA19040
- Lot Number:** 5121
- Quantity:** 100 µg in 100 µl (1 mg/ml) in PBS containing 0.02% sodium azide.
- Description:** PSDR1 is a novel prostate short-chain dehydrogenase/reductase that exhibits increased expression on exposure to androgens in the LNCaP prostate cancer cell line. PSDR1 is expressed in normal and neoplastic prostate epithelium and is implicated in the pathogenesis of prostate carcinoma.
- Host Species:** Rabbit
- Specificity:** Reacts with N terminal sequence MVELMFP and the C terminal sequence LLGLPID of the human PSDR1 protein.



- Applications:** Western blot – Use at 1:500 to 1:1,000 dilution. However, the investigator should determine the optimal dilution for a specific application such as immunohistochemistry.
- Format:** Affinity purified IgG
- Storage:** Maintain at +2-8°C for 3 months or at -20°C for longer periods. Stable for 1 year. Avoid repeated freeze-thaw cycles.

Reference: Lin B et al. Cancer Res 2001 Feb 15;61(4):1611-8

FOR RESEARCH USE ONLY

v1

Neuromics' reagents are for in vitro and certain non-human in vivo experimental use only and not intended for use in any human clinical investigation, diagnosis, prognosis, or treatment. We disclaim all liability in connection with the use of the information contained herein or otherwise, and all such risks are assumed by the user.