



Catalog Number:	RA25019	Host:	Rabbit
Product Type:	Affinity Purified	Species Reactivity:	Human, Mouse, Rat, Chicken
Immunogen Sequence:	A synthetic peptide made to an internal region within residues 500-600 of the human protein. [Swiss-Prot# O60313]	Format:	Liquid -PBS with .05% Sodium Azide. Concentration of 1.07 mg/ml.
Applications:	Western blot-. 2.0 ug/ml Immunohistochemistry-2.5 ug/ml		

Storage: Dilutions listed as a recommendation. Optimal dilution should be determined by investigator. Store frozen. Aliquot as undiluted antisera and immediately place at -20°C. Antisera may have become trapped in top of vial during shipping. Centrifugation of vial is recommended before opening. Stable for at least 6 months at -20°C. Repeated freeze/thaw cycles compromise the integrity of the antiserum.

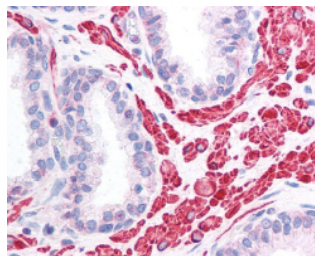
Application Notes

100% homology between human, mouse, rat, and chicken. Positive Control: Human Brain Lysates. This antibody is useful for Western blot analysis where a band is seen at ~111 kDa. Also works well in immunohistochemistry.

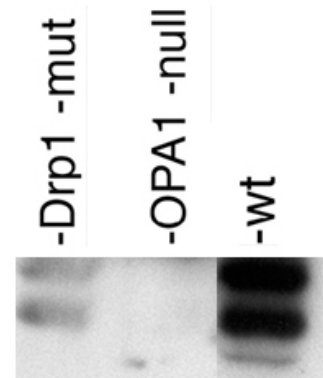
Description/Data:

This gene product is a nuclear-encoded mitochondrial protein with similarity to dynamin-related GTPases. It is a component of the mitochondrial network. Mutations in this gene have been associated with optic atrophy type 1, which is a dominantly inherited optic neuropathy resulting in progressive loss of visual acuity, leading in many cases to legal blindness. Eight transcript variants encoding different isoforms, resulting from alternative splicing of exon 4 and two novel exons named 4b and 5b, have been reported for this gene.

Left Image: OPA1 staining of prostatic smooth muscle and glandular epithelium. 40X Magnification



Right Image: Detection of Opa-1 protein in post-nuclear extracts of mouse embryonic fibroblasts.



FOR RESEARCH USE ONLY

NEUROMICS' REAGENTS ARE FOR IN VITRO AND CERTAIN NON-HUMAN IN VIVO EXPERIMENTAL USE ONLY AND NOT INTENDED FOR USE IN ANY HUMAN CLINICAL INVESTIGATION, DIAGNOSIS, PROGNOSIS, OR TREATMENT. THE ABOVE ANALYSES ARE MERELY TYPICAL GUIDES. THEY ARE NOT TO BE CONSTRUED AS BEING SPECIFICATIONS. ALL OF THE ABOVE INFORMATION IS, TO THE BEST OF OUR KNOWLEDGE, TRUE AND ACCURATE. HOWEVER, SINCE THE CONDITIONS OF USE ARE BEYOND OUR CONTROL, ALL RECOMMENDATIONS OR SUGGESTIONS ARE MADE WITHOUT GUARANTEE, EXPRESS OR IMPLIED, ON OUR PART. WE DISCLAIM ALL LIABILITY IN CONNECTION WITH THE USE OF THE INFORMATION CONTAINED HEREIN OR OTHERWISE, AND ALL SUCH RISKS ARE ASSUMED BY THE USER. WE FURTHER EXPRESSLY DISCLAIM ALL WARRANTIES OF MERCHANTABILITY AND FITNESS FOR A PARTICULAR PURPOSE. -V2/08/2012