



Myelin Basic Protein

Data Sheet

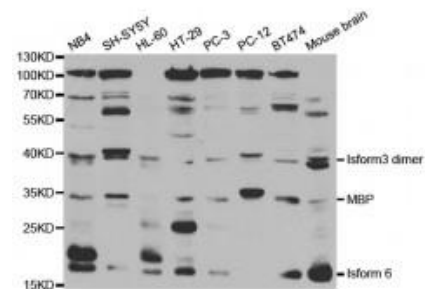
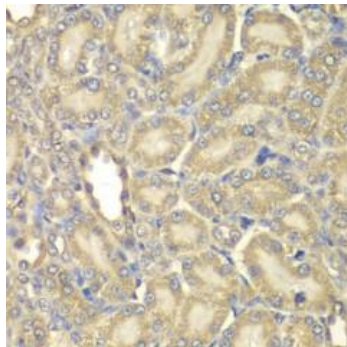
Catalog Number:	RA34012	Host:	Rabbit
Product Type:	Polyclonal Affinity Purified Antibody	Species Reactivity:	Human, Mouse, Rat
Immunogen Sequence:	Recombinant protein of human MBP	Format:	PBS with 0.02% sodium azide, 50% glycerol, pH7.4. 100 ul aliquot. Concentration: 1 mg/ml
Applications:	Immunohistochemistry: 1:50-200 Western Blot: 1:500-1:2,000		
	Dilutions listed as a recommendation. Optimal dilution should be determined by investigator.		
Storage:	Antibody can also be aliquoted and stored frozen at -20° C in a manual defrost freezer for six months without detectable loss of activity. Avoid repeated freeze-thaw cycles.		

Application Notes

Description/Data:

MBP belongs to the myelin basic protein family. The classic group of MBP isoforms (isoform 4-isoform 14) are the most abundant protein components of the myelin membrane in the CNS. They have a role in both its formation and stabilization. The smaller isoforms might have an important role in remyelination of denuded axons in multiple sclerosis. The non-classic group of MBP isoforms (isoform 1-isoform 3/Golli-MBPs) may preferentially have a role in the early developing brain long before myelination, maybe as components of transcriptional complexes, and may also be involved in signaling pathways in T-cells and neural cells. This is a rabbit polyclonal antibody raised against the full-length of human MBP, and is capable of recognizing multiple isoforms of MBP.

Image (right): Western blot analysis of extracts of various cell lines, using MBP antibody. Below image: Immunohistochemistry of paraffin-embedded rat kidney using MBP antibody at dilution of 1:200 (400x lens).



FOR RESEARCH USE ONLY

NEUROMICS' REAGENTS ARE FOR IN VITRO AND CERTAIN NON-HUMAN IN VIVO EXPERIMENTAL USE ONLY AND NOT INTENDED FOR USE IN ANY HUMAN CLINICAL INVESTIGATION, DIAGNOSIS, PROGNOSIS, OR TREATMENT. THE ABOVE ANALYSES ARE MERELY TYPICAL GUIDES. THEY ARE NOT TO BE CONSTRUED AS BEING SPECIFICATIONS. ALL OF THE ABOVE INFORMATION IS, TO THE BEST OF OUR KNOWLEDGE, TRUE AND ACCURATE. HOWEVER, SINCE THE CONDITIONS OF USE ARE BEYOND OUR CONTROL, ALL RECOMMENDATIONS OR SUGGESTIONS ARE MADE WITHOUT GUARANTEE, EXPRESS OR IMPLIED, ON OUR PART. WE DISCLAIM ALL LIABILITY IN CONNECTION WITH THE USE OF THE INFORMATION CONTAINED HEREIN OR OTHERWISE, AND ALL SUCH RISKS ARE ASSUMED BY THE USER. WE FURTHER EXPRESSLY DISCLAIM ALL WARRANTIES OF MERCHANTABILITY AND FITNESS FOR A PARTICULAR PURPOSE.-V2/08/2012