



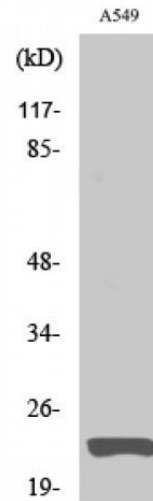
Catalog Number:	RA34007	Host:	Rabbit
Product Type:	Affinity Purified Polyclonal Antibody	Species Reactivity:	Human, Mouse, Rat
Immunogen Sequence:	Synthesized peptide derived from the C-terminal region of human Claudin-5. at AA range: 140-220 Gene ID: 7122; Swiss-Prot Key: O00501	Format:	Liquid in PBS containing 50% glycerol, 0.5% BSA and 0.02% sodium azide. 100 ul aliquot Concentration: 1 mg/ml
Applications:	Western Blot: 1:500-2,000 Immunohistochemistry: 1:100-300 IF: 1:200-1,000 ELISA: 1:40,000		
Storage:	Dilutions listed as a recommendation. Optimal dilution should be determined by investigator. Antibody can also be aliquoted and stored frozen at -20° C in a manual defrost freezer for six months without detectable loss of activity. Avoid repeated freeze-thaw cycles.		

Application Notes

Description/Data:

Specificity: Claudin-5 Polyclonal Antibody detects endogenous levels of Claudin-5 protein

Image: Western Blot analysis of A549 cells using Claudin-5 Polyclonal Antibody



FOR RESEARCH USE ONLY

NEUROMICS' REAGENTS ARE FOR IN VITRO AND CERTAIN NON-HUMAN IN VIVO EXPERIMENTAL USE ONLY AND NOT INTENDED FOR USE IN ANY HUMAN CLINICAL INVESTIGATION, DIAGNOSIS, PROGNOSIS, OR TREATMENT. THE ABOVE ANALYSES ARE MERELY TYPICAL GUIDES. THEY ARE NOT TO BE CONSTRUED AS BEING SPECIFICATIONS. ALL OF THE ABOVE INFORMATION IS, TO THE BEST OF OUR KNOWLEDGE, TRUE AND ACCURATE. HOWEVER, SINCE THE CONDITIONS OF USE ARE BEYOND OUR CONTROL, ALL RECOMMENDATIONS OR SUGGESTIONS ARE MADE WITHOUT GUARANTEE, EXPRESS OR IMPLIED, ON OUR PART. WE DISCLAIM ALL LIABILITY IN CONNECTION WITH THE USE OF THE INFORMATION CONTAINED HEREIN OR OTHERWISE, AND ALL SUCH RISKS ARE ASSUMED BY THE USER. WE FURTHER EXPRESSLY DISCLAIM ALL WARRANTIES OF MERCHANTABILITY AND FITNESS FOR A PARTICULAR PURPOSE.-V2/08/2012