



Catalog Number:	RA19061	Host:	Rabbit
Product Type:	Affinity Purified	Species:	Human
Immunogen Sequence:	Reacts with residues 367-385 (ILSTAKKTKPHRSGDPSA) of the human GLUT10 protein.	Reactivity:	
		Format:	Liquid. 100 ug in 100 ul (1 mg/ml) in PBS containing 0.02% sodium azide
Applications:	Western Blot: 1:500-1,000 Dilutions listed as a recommendation. Optimal dilution should be determined by investigator.		
Storage:	Maintain at +2-8°C for 3 months or at -20°C for longer periods. Stable for 1 year. Avoid repeated freeze-thaw cycles.		

Application Notes

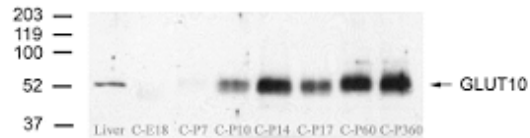
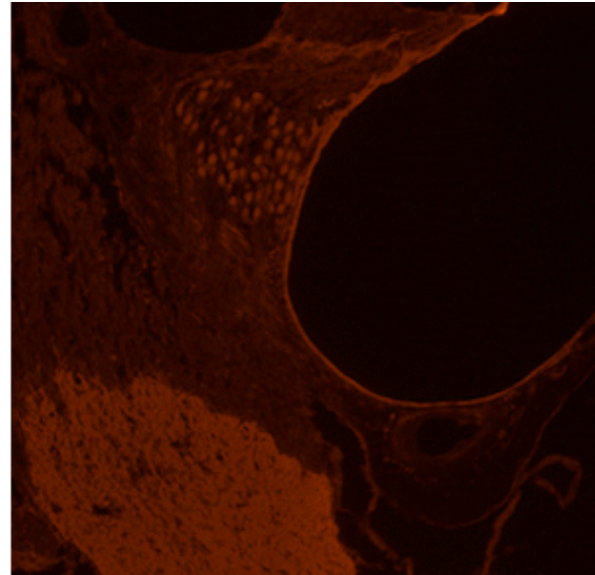
Description/Data:

Non-insulin-dependent diabetes mellitus (NIDDM) is a multifactorial disease with both environmental and genetics causes. Genome-wide screening procedures have identified several susceptibility loci for NIDDM within the human genome. A putative sugar transporter that has been localized to human chromosome 20q12-q13.1, one of the genomic loci associated with NIDDM. Because of the strong resemblance of this novel protein to members of the mammalian facilitative glucose transporter family (GLUT), the protein is known as GLUT10 (HGMW-approved gene symbol SLC2A10). Data suggests that GLUT10 an excellent candidate for a susceptibility gene involved in NIDDM.

Image: GLUT10 staining of Mouse Chlochea Tissue

WB Image:

1. 10 ug of protein from liver
2. 10ug of protein from cochlea (E18)
3. 10ug of protein from cochlea (P7)
4. 10ug of protein from cochlea (P10)
5. 10ug of protein from cochlea (P14)
6. 10ug of protein from cochlea (P17)
7. 10ug of protein from cochlea (P60)
8. 10ug of protein from cochlea (1 Year)



FOR RESEARCH USE ONLY

NEUROMICS' REAGENTS ARE FOR IN VITRO AND CERTAIN NON-HUMAN IN VIVO EXPERIMENTAL USE ONLY AND NOT INTENDED FOR USE IN ANY HUMAN CLINICAL INVESTIGATION, DIAGNOSIS, PROGNOSIS, OR TREATMENT. THE ABOVE ANALYSES ARE MERELY TYPICAL GUIDES. THEY ARE NOT TO BE CONSTRUED AS BEING SPECIFICATIONS. ALL OF THE ABOVE INFORMATION IS, TO THE BEST OF OUR KNOWLEDGE, TRUE AND ACCURATE. HOWEVER, SINCE THE CONDITIONS OF USE ARE BEYOND OUR CONTROL, ALL RECOMMENDATIONS OR SUGGESTIONS ARE MADE WITHOUT GUARANTEE, EXPRESS OR IMPLIED, ON OUR PART. WE DISCLAIM ALL LIABILITY IN CONNECTION WITH THE USE OF THE INFORMATION CONTAINED HEREIN OR OTHERWISE, AND ALL SUCH RISKS ARE ASSUMED BY THE USER. WE FURTHER EXPRESSLY DISCLAIM ALL WARRANTIES OF MERCHANTABILITY AND FITNESS FOR A PARTICULAR PURPOSE.-V2/08/2012