



Catalog Number:	RA25018	Host:	Rabbit
Product Type:	Affinity Purified	Species Reactivity:	Human
Immunogen Sequence:	A synthetic peptide within the N-terminal region [residues 1-100] of the human TREK 1 protein. [Swiss-Prot# Q9NRT2]	Format:	Liquid -PBS with .05% Sodium Azide. Concentration of 1 mg/ml.
Applications:	Western blot-2 ug/ml		
Storage:	*Dilutions listed as a recommendation. Optimal dilution should be determined by investigator. Store frozen. Aliquot as undiluted antisera and immediately place at -20°C. Antisera may have become trapped in top of vial during shipping. Centrifugation of vial is recommended before opening. Stable for at least 6 months at -20°C. Repeated freeze/thaw cycles compromise the integrity of the antiserum.		

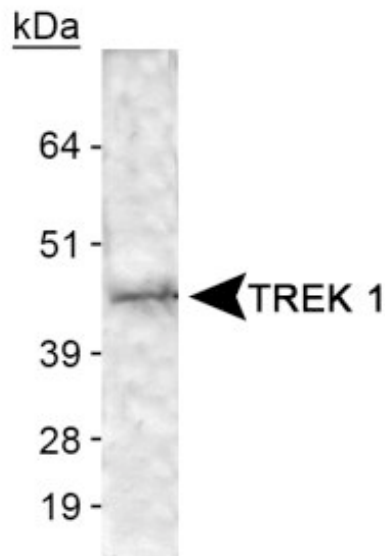
Application Notes

Homology is 100% with human, mouse, cow and 88% with rat. Antibody was tested for Western Blots only. It is essential to run against membrane preps.

Description/Data:

TREK-1 is a two-pore-domain background potassium channel expressed throughout the central nervous system. It is opened by polyunsaturated fatty acids and lysophospholipids. As well, it is regulated by various neurotransmitters. It has been shown that alterations in the functioning, regulation, or both of the TREK-1 channel may alter mood. TREK-1 is also activated by volatile anesthetics and has been suggested to be an important target in the action of these drugs. Therefore, this particular K⁺ channel emerges as a potential innovative target for developing new therapeutic agents for anesthesiology and neurology, such as antidepressants.

Image: Detection of TREK 1 in human brain membrane lysate.



FOR RESEARCH USE ONLY

NEUROMICS' REAGENTS ARE FOR IN VITRO AND CERTAIN NON-HUMAN IN VIVO EXPERIMENTAL USE ONLY AND NOT INTENDED FOR USE IN ANY HUMAN CLINICAL INVESTIGATION, DIAGNOSIS, PROGNOSIS, OR TREATMENT. THE ABOVE ANALYSES ARE MERELY TYPICAL GUIDES. THEY ARE NOT TO BE CONSTRUED AS BEING SPECIFICATIONS. ALL OF THE ABOVE INFORMATION IS, TO THE BEST OF OUR KNOWLEDGE, TRUE AND ACCURATE. HOWEVER, SINCE THE CONDITIONS OF USE ARE BEYOND OUR CONTROL, ALL RECOMMENDATIONS OR SUGGESTIONS ARE MADE WITHOUT GUARANTEE, EXPRESS OR IMPLIED, ON OUR PART. WE DISCLAIM ALL LIABILITY IN CONNECTION WITH THE USE OF THE INFORMATION CONTAINED HEREIN OR OTHERWISE, AND ALL SUCH RISKS ARE ASSUMED BY THE USER. WE FURTHER EXPRESSLY DISCLAIM ALL WARRANTIES OF MERCHANTABILITY AND FITNESS FOR A PARTICULAR PURPOSE. -V2/08/2012