



Calcium Sensing Receptor

Data Sheet

Catalog Number:	MO25048	Host:	Mouse
Product Type:	Protein G purified IgG ₁ ,Kappa (Clone: HL 1499)	Species Reactivity:	Human, Mouse Rat, Rabbit
Immunogen Sequence:	N-terminal, extracellular region of human Calcium Sensing Receptor. [UniProt# P41180].	Format:	Liquid with Tris-glycine, 150mM NaCl pH 7.5. Concentration 1 mg/ml.

Applications: Western Blot 1:50-1:200
ELISA 1:100-1:2000
Immunocytochemistry/Immunofluorescence 1:50-1:200
Immunohistochemistry 1:50-1:200
Immunohistochemistry-Frozen 1:50-1:200
Immunoprecipitation 5-10 ug
Radioimmunoassay

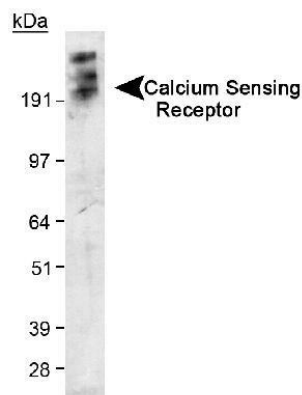
*Dilutions listed as a recommendation. Optimal dilution should be determined by investigator.

Storage: Store frozen. Aliquot as undiluted antisera and immediately place at -20°C. Antisera may have become trapped in top of vial during shipping. Centrifugation of vial is recommended before opening. Stable for at least 6 months at -20°C. Repeated freeze/thaw cycles compromise the integrity of the antiserum.

Application Notes

This Osteopontin (1B20) antibody is useful for Western blot, Immunohistochemistry on paraffin-embedded sections, Immunocytochemistry/Immunofluorescence and Immunoprecipitation. In Western blot multiple bands can be seen due to glycosylation and phosphorylation of the protein.

Image: Western Blot of Calcium Sensing Receptor in transfected 293 cell lysate. ECL exposure, 5 minutes. In this photo, the protein has aggregated and thus the higher MW band as expected.



FOR RESEARCH USE ONLY

NEUROMICS' REAGENTS ARE FOR IN VITRO AND CERTAIN NON-HUMAN IN VIVO EXPERIMENTAL USE ONLY AND NOT INTENDED FOR USE IN ANY HUMAN CLINICAL INVESTIGATION, DIAGNOSIS, PROGNOSIS, OR TREATMENT. THE ABOVE ANALYSES ARE MERELY TYPICAL GUIDES. THEY ARE NOT TO BE CONSTRUED AS BEING SPECIFICATIONS. ALL OF THE ABOVE INFORMATION IS, TO THE BEST OF OUR KNOWLEDGE, TRUE AND ACCURATE. HOWEVER, SINCE THE CONDITIONS OF USE ARE BEYOND OUR CONTROL, ALL RECOMMENDATIONS OR SUGGESTIONS ARE MADE WITHOUT GUARANTEE, EXPRESS OR IMPLIED, ON OUR PART. WE DISCLAIM ALL LIABILITY IN CONNECTION WITH THE USE OF THE INFORMATION CONTAINED HEREIN OR OTHERWISE, AND ALL SUCH RISKS ARE ASSUMED BY THE USER. WE FURTHER EXPRESSLY DISCLAIM ALL WARRANTIES OF MERCHANTABILITY AND FITNESS FOR A PARTICULAR PURPOSE.-V1-11/2013