



Catalog Number:	RA19062	Host:	Rabbit
Product Type:	Affinity Purified Antibody	Species Reactivity:	Human, Mouse
Immunogen Sequence:	Reacts with residues 31-44 of the mouse RELMalpha protein.	Format:	Liquid. 100 ug in 100 ul (1 mg/ml) in PBS containing 0.02% sodium azide
Applications:	Western Blot: 1:500-1,000 Dilutions listed as a recommendation. Optimal dilution should be determined by investigator.		
Storage:	Maintain at +2-8°C for 3 months or at -20°C for longer periods. Stable for 1 year. <i>Avoid repeated freeze-thaw cycles.</i>		
Reference:	Steppan C.M. et al. Proc Natl Acad Sci U S A 2001 Jan 16;98(2):502-6		

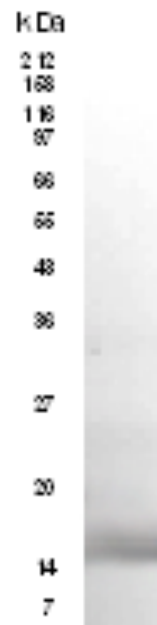
Application Notes

Description/Data:

A family of resistin-like molecules (RELMs) has been identified in rodents and humans. RELM alpha belongs to a unique family of tissue-specific cytokines termed FIZZ (found in inflammatory zone) and RELM.

RELMs are inflammatory marker of atherosclerosis in humans. They are also suspected to play a role in Obesity.

Image: WB of mRELM alpha from media of transfected 293T cells.



FOR RESEARCH USE ONLY

NEUROMICS' REAGENTS ARE FOR IN VITRO AND CERTAIN NON-HUMAN IN VIVO EXPERIMENTAL USE ONLY AND NOT INTENDED FOR USE IN ANY HUMAN CLINICAL INVESTIGATION, DIAGNOSIS, PROGNOSIS, OR TREATMENT. THE ABOVE ANALYSES ARE MERELY TYPICAL GUIDES. THEY ARE NOT TO BE CONSTRUED AS BEING SPECIFICATIONS. ALL OF THE ABOVE INFORMATION IS, TO THE BEST OF OUR KNOWLEDGE, TRUE AND ACCURATE. HOWEVER, SINCE THE CONDITIONS OF USE ARE BEYOND OUR CONTROL, ALL RECOMMENDATIONS OR SUGGESTIONS ARE MADE WITHOUT GUARANTEE, EXPRESS OR IMPLIED, ON OUR PART. WE DISCLAIM ALL LIABILITY IN CONNECTION WITH THE USE OF THE INFORMATION CONTAINED HEREIN OR OTHERWISE, AND ALL SUCH RISKS ARE ASSUMED BY THE USER. WE FURTHER EXPRESSLY DISCLAIM ALL WARRANTIES OF MERCHANTABILITY AND FITNESS FOR A PARTICULAR PURPOSE.-V2/08/2012