



Catalog Number:	MO20006	Host:	Mouse
Product Type:	Protein G purified IgG ₁	Species Reactivity:	Human
Immunogen Sequence:	Human lymphocytes.	Format:	Liquid-tissue culture supernatant containing 15mM sodium azide.

Applications: Immunohistochemistry -1:15-1:30 (Paraffin-embedded tissue)

Dilutions listed as a recommendation. Optimal dilution should be determined by investigator.

Storage: Antibody can be aliquotted and stored frozen at -20° C to -70° C in a manual defrost freezer for six months without detectable loss of activity. The antibody can be stored at 2° - 8° C for 1 month without detectable loss of activity. *Avoid repeated freeze-thaw cycles.*

Application Notes

CD1a antigen detection

Normal Tissues-Clone MTB1 detects the CD1a antigen on the cell surface of dendritic cells and cortical thymocytes of the thymus, Langerhans' cells and interdigitating dendritic cells of skin and interdigitating dendritic cells of tonsil (n=21/53).

Tumor Tissues Clone MTB1 stained Langerhans' cells and interdigitating dendritic cells in neoplastic (n=17/94) tissues. NCL-CD1a-235 is recommended for use in detecting CD1a protein expression in a variety of normal and neoplastic tissues, including Langerhans' cell histiocytosis and thymomas.

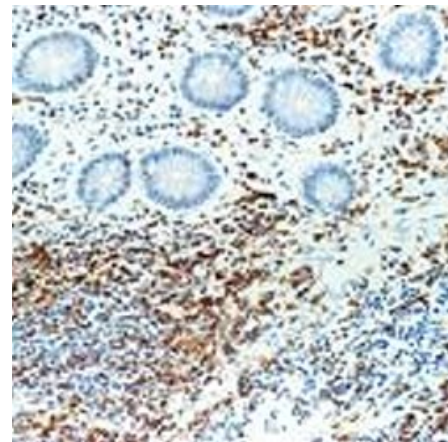
Immunohistochemistry

Paraffin embedded tissue only-the recommended fixative is 10% neutral-buffered formalin for paraffin-embedded tissue sections. Optimal tissue incubation-60 min. at 25° C.

Description/Data:

The CD43 antigen is expressed on the membrane and in the cytoplasm of T cells and cells of myeloid lineage. The molecule itself exhibits molecular weight heterogeneity with bands of 90 to 140kD observed on SDS-PAGE between different cell lines. Cells expressing the CD43 antigen are reported to include normal and neoplastic T cells. A small proportion of B cell chronic leukemias and centrocytic lymphomas are also reported to express CD43 antigen.

Image: CD43 (clone MT1) staining of paraffin embedded Human mantle cell lymphoma. Note intense membrane staining of tumor cells.



FOR RESEARCH USE ONLY

NEUROMICS' REAGENTS ARE FOR IN VITRO AND CERTAIN NON-HUMAN IN VIVO EXPERIMENTAL USE ONLY AND NOT INTENDED FOR USE IN ANY HUMAN CLINICAL INVESTIGATION, DIAGNOSIS, PROGNOSIS, OR TREATMENT. THE ABOVE ANALYSES ARE MERELY TYPICAL GUIDES. THEY ARE NOT TO BE CONSTRUED AS BEING SPECIFICATIONS. ALL OF THE ABOVE INFORMATION IS, TO THE BEST OF OUR KNOWLEDGE, TRUE AND ACCURATE. HOWEVER, SINCE THE CONDITIONS OF USE ARE BEYOND OUR CONTROL, ALL RECOMMENDATIONS OR SUGGESTIONS ARE MADE WITHOUT GUARANTEE, EXPRESS OR IMPLIED, ON OUR PART. WE DISCLAIM ALL LIABILITY IN CONNECTION WITH THE USE OF THE INFORMATION CONTAINED HEREIN OR OTHERWISE, AND ALL SUCH RISKS ARE ASSUMED BY THE USER. WE FURTHER EXPRESSLY DISCLAIM ALL WARRANTIES OF MERCHANTABILITY AND FITNESS FOR A PARTICULAR PURPOSE.-V2/08/2012

www.neuromics.com

Neuromics Antibodies • 5325 West 74th Street, Suite 8 • Edina, MN 55439
phone 866-350-1500 • fax 612-677-3976 • e-mail: pshuster@neuromics.com