



Catalog Number:	CH22135	Host:	Chicken
Product Type:	Chicken Polyclonal	Species Reactivity:	Human, Rat, Mouse
Immunogen Sequence:	Mixture of recombinant human Ki67 constructs expressing the N-terminal region, amino acids 1-300 and an internal region, amino acids 1111-1490	Format:	Supplied as an aliquot of IgY preparation plus 5mM NaN3
Applications:	Immunofluorescence: 1:1,000-5,000 Western Blot: 1:5,000		
Storage:	Dilutions listed as a recommendation. Optimal dilution should be determined by investigator. The antibody can be stored at 2° - 8° C for 12 months without detectable loss of activity. Avoid repeated freeze-thaw cycles.		

Application Notes

Description/Data

The Ki67 protein was first discovered when researchers attempted to generate cancer cell specific monoclonal antibodies by injecting mice with nuclear preparations from Hodgkin's lymphoma cells. They obtained a monoclonal antibody which recognized two large proteins of apparent molecular weight 345kDa and 395kDa. The presence of the Ki67 protein is frequently used as an indicator of cell proliferation and its level of expression is one of the most reliable biomarkers of proliferative status of cancer cells. Much research shows a correlation between Ki67 protein level and prognosis in cancer patients, when high Ki67 levels being associated with poorer outcomes.

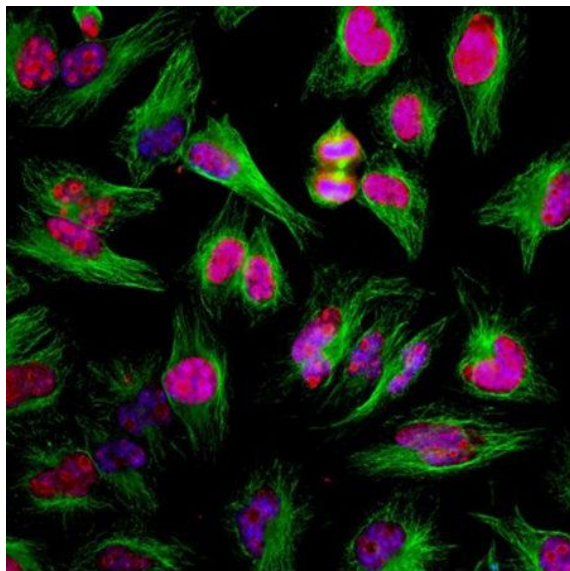


Image: Immunofluorescent analysis of HeLa cells stained with chicken pAb to Ki67, CH22135, dilution 1:2,000 in red, and mouse mAb to β -tubulin, dilution 1:5,000 in green. The blue is DAPI staining of nuclear DNA.

FOR RESEARCH USE ONLY

NEUROMICS' REAGENTS ARE FOR IN VITRO AND CERTAIN NON-HUMAN IN VIVO EXPERIMENTAL USE ONLY AND NOT INTENDED FOR USE IN ANY HUMAN CLINICAL INVESTIGATION, DIAGNOSIS, PROGNOSIS, OR TREATMENT. THE ABOVE ANALYSES ARE MERELY TYPICAL GUIDES. THEY ARE NOT TO BE CONSTRUED AS BEING SPECIFICATIONS. ALL OF THE ABOVE INFORMATION IS, TO THE BEST OF OUR KNOWLEDGE, TRUE AND ACCURATE. HOWEVER, SINCE THE CONDITIONS OF USE ARE BEYOND OUR CONTROL, ALL RECOMMENDATIONS OR SUGGESTIONS ARE MADE WITHOUT GUARANTEE, EXPRESS OR IMPLIED, ON OUR PART. WE DISCLAIM ALL LIABILITY IN CONNECTION WITH THE USE OF THE INFORMATION CONTAINED HEREIN OR OTHERWISE, AND ALL SUCH RISKS ARE ASSUMED BY THE USER. WE FURTHER EXPRESSLY DISCLAIM ALL WARRANTIES OF MERCHANTABILITY AND FITNESS FOR A PARTICULAR PURPOSE.-V1-10/2013